



SPOTLIGHT ON MADELYN MYERS

Madelyn Myers, from North Star FCCLA, was recently selected as a recipient of the Access Scholarship to attend NLC, where she will be competing in Food Innovations. A two year member, Madelyn says, "I am excited to attend the National Leadership Conference to meet new people, gather resources to take back to our organization, and gain skills to make me a better, more effective leader."

COOKING UP COLLABORATION FOR THE CHEF MENTOR LUNCHEON

The Chef Mentor Luncheon was a remarkable collaboration, uniting the efforts of Glacier, Flathead, Linderman, Columbia Falls, high schools and Kalispell Middle School to bridge the gap between industry professionals and Family and Consumer Sciences (FCS) classes. Together, students from these schools contributed their skills and passion to craft an extraordinary array of appetizers, main courses, and desserts. Chef Andy Blanton, a five-time James Beard nominee, was our esteemed guest speaker, Chef Blanton not only shared insights from his illustrious career but also offered valuable opportunities for students to pursue positions within the culinary industry. Amidst the culinary showcase, students and guests alike relished the chance to dine together, (continued on page 3)

CONNECT WITH US!



COMING UP!

May 15-September 1:
Early registration for Fall
Rally

June 10-12: Summer
Update, Bozeman

June 17: STAR Events
confirmation due for NLC

June 28-July 2: NLC at
Seattle

September 15:
Registration closes for
Fall Rally

September 22-23: Fall
Rally at the Billings Hotel
& Convention Center

ADVISER RECOGNITION!



Both of these amazing advisers will be recognized at the upcoming National Leadership Conference in Seattle!

Congrats to Mandy Eike, Moore, for Spirit of Advising award and to Bethany Ringer, Gallatin, for completing the Adviser Academy, Course 2!



CULINARY CORNER



Do you work in a restaurant? Have you been working concessions for your school? Consider applying for a COA

A Certificate of Achievement (COA) will set you apart from others applying for future hospitality jobs. It is nationally recognized and can even help you earn more money as a new employee!

You are required to demonstrate that you can do 52 of 75 competencies, which I bet you already have quite a few of them down! Between your culinary program at school and the job you have, I'm sure you have learned

many of these required skills. Some of the traits needed include: proper handwashing, showing up to work on time, measuring ingredients accurately, counting change back correctly, and many other things. While there are some specific technical and culinary skills on the list, it is not as intimidating and advanced as you might think.

*Remember, hours working at the concession stand, catering, and at your job can all count towards your hours!

This IS an achievable certificate to earn, you've got this! It will benefit you in many ways if hospitality/culinary are in your future plans!

Talk with your advisor or reach out to me at jordan@mtfccla.org for more information.

Got an idea of how to improve ProStart for next year? Have questions about it? Interested in some additional training?

Please fill out this survey to share ideas of how we can better support you. [ProStart Educator Training Needs Assessment](#)



FCCLA AROUND THE STATE



Bridger FCCLA was recently recognized as a Lead 4 Change winner. The chapter matched their \$2,000 prize to make a contribution to the Bridger Senior Center, with a gift of \$4,000



The Bozeman High School FCCLA recently created items for a local fundraiser to benefit Haven House.



Chef Mentor Luncheon (continued from page 1)
fostering connections and camaraderie. Furthermore, the luncheon seamlessly merged with our Occupational Advisory Committee meeting, enriching the experience with comprehensive insights and collaborative efforts. This event exemplified the power of partnership and mentorship in cultivating the next generation of culinary talents.

~ Tamara Fisher, Glacier FCS & FCCLA

REMIND FOR ADVISERS!

REMINDER

Advisers who would like to receive text notifications and reminders, please text @mtadvisers to the number 81010

POWER
of ONE



NATIONAL PROGRAM SPOTLIGHT: POWER OF ONE

Power of One is the National Program that helps members to find and use their personal power. Members set their own goals, work to achieve them, and enjoy the results. The skills members learn in Power of One help them now and in the future with school, friends and family, and on the job.

Power of One Units

- A Better You - improve personal traits
- Family Ties - get along better with family members
- Working on Working - explore work options, prepare for a career, or sharpen skills useful in business
- Take the Lead - develop leadership qualities
- Speak Out for FCCLA - tell others about positive experiences in FCCLA

Getting started is easy! Choose the unit you'd like to begin with, and visit the Power of One page to learn more! Members completing all five units in the same membership year receive national recognition for their accomplishments!

FALL RALLY IS BACK--SEPTEMBER 22-23 IN BILLINGS!



Save the date for September 22-23! Montana FCCLA is offering the Fall Leadership Rally to help chapters kick off the year strong! Each chapter may register two chapter officers, two chapter leaders/newer members, two State Outreach Project leaders, and any District Officers or advisers for the chapter. The conference theme is Dream to Achieve. Attendees will learn about the FCCLA opportunities available to them, hone leadership skills, and network with other members. Keynote speaker Crissy Lauterbach from Contact Learning will inspire attendees with the challenge of dreaming boldly and taking the initiative to turn dreams into reality. Brooklynn Gross of the Leadership Training Team will also be presenting at the conference. Register before summer break, then update attendees by September 1 for the best conference rates. Full conference details are included later in this newsletter. Find the registration link on the [Montana FCCLA website](https://www.montanafccla.org).

This document summarizes Montana FCCLA's partners, growth, funding, and the opportunities provided to members through the Ultimate Leadership Experience.

PARTNERSHIPS

- The Montana Department of Education sponsored grants and awards for chapter traffic safety projects
- Youth Service America sponsored chapter service grants, chapter service project participation incentives, and two state-level service projects
- ProStart sponsored culinary teacher training opportunities, the state-level ProStart and FCCLA Culinary Competition, the Montana ProStart Leadership and Service Scholarship and the Montana ProStart Ultimate Leader awards.
- Montana State University and Gallatin College served as a sponsors for our State Leadership Conference, along with Montana Mex, the Montana Restaurant Association Educational Foundation, the Montana Chamber Foundation, Zwilling/JA Henckles, and the Montana Office of Public Instruction.

MEMBERSHIP

In 2023-24, Montana FCCLA consisted of:
1309 Members in grades 6-12
63 Chapters
75 Chapter Advisers

Our membership grew by 22% over the 2023-24 year!

OPPORTUNITIES

In 2023-24, Montana FCCLA offered opportunities to chapters and members, including:

LEADERSHIP & RECOGNITION

- State Leadership Conference
- Support for State Executive Council Activities
- District Meetings
- Competitive Events

CAREER TRAINING PROGRAMS

- ProStart Program Support
- ProStart Competition

SERVICE

- Chapter Service Project Grants
- Chapter Service Project Incentives and Recognition
- State Leadership Conference Service Project Training Sessions & Projects
- Service Hall of Fame

TEACHER & ADVISER SUPPORT

- Staff Training
- Advisor Communities Mentoring Program
- Recognition
- Culinary Training and Program Materials
- Hybrid Conference

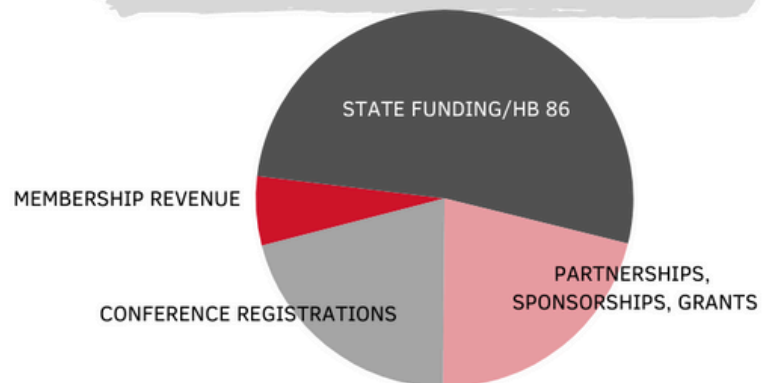
MEMBER RECRUITMENT

- District Meetings

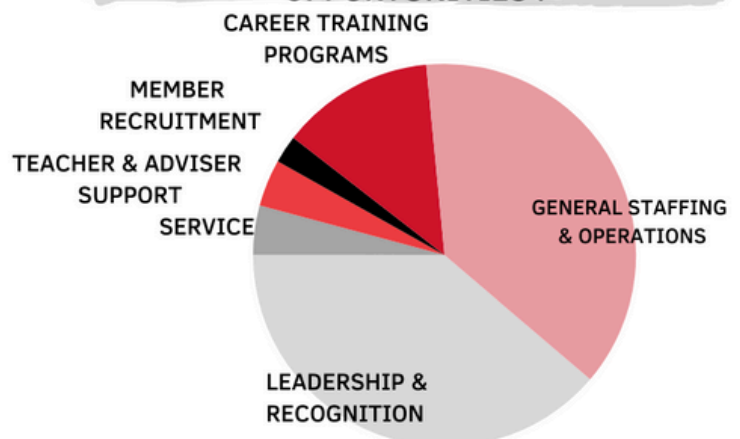
GENERAL STAFFING & OPERATIONS

- Salaries & taxes
- Insurance, supplies, technology

IN 2023-24, MONTANA FCCLA WAS FUNDED THROUGH THESE SOURCES:



IN 2023-24, MONTANA FCCLA USED FUNDING IN THIS WAY TO OFFER THESE OPPORTUNITIES :



ENGAGEMENT

- 96% of chapters attended District Meetings
- 13 Chapters Recognized through the STAR Chapter Program
- 307 Competitive Events Participants at SLC
- Membership increase of 22%
- Three new chapters affiliated

OUTREACH & SERVICE

- 16,624 Service Hours Reported
- 31 Chapters Reporting Service Hours
- Engaged 2,190 volunteers
- 3 Outreach Project Grant Opportunities for chapters
- Service Hall of Fame Recognition

CAREER DEVELOPMENT

- 15 College/Career Readiness Workshops at SLC
- 20 Participants in the College and Career Readiness Fair
- Industry Immersion Tour at State Leadership Conference

STUDENT OPPORTUNITIES

- State Leadership Conference
- District Meetings
- Fall Rally
- Competitive Events
- Leadership and Service Scholarship
- ProStart Leadership and Service Scholarship
- Ultimate Leader Award
- ProStart Ultimate Leader Award
- Officer Candidate Opportunities

ADVISER OPPORTUNITIES

- New Adviser Webinar Series
- Monthly Adviser Webinars
- Adviser Communities Mentoring Program
- Hybrid Conference
- Culinary Educator Training
- First Time SLC Attendee Stipend
- New Adviser of the Year, Adviser of the Year, Spirit of Advising, ProStart Educator of Excellence Awards

PARTNERSHIPS

- 20 Participants in the College and Career Readiness Fair
- 18 Sponsors for SLC
- 60% partnership growth





JOIN US FOR

FALL RALLY



SEPTEMBER 22-23, 2024

BILLINGS CONVENTION CENTER

Tentative Conference Program Includes:

- Keynote Crissy Lauterbach
- FCCLA Leadership Training with Brooklynn Gross, FCCLA Leadership Training Team
- State Outreach Project Training
- Chapter Planning Time
- District Meetings
- Trivia Night and attendance prizes



Keynote Speaker
Crissy Lauterbach



Each chapter may register:

- Two Chapter Leader attendees
- Two Chapter Officer attendees
- Two State Outreach Project training attendees

Additionally, all District and State Officers, and Chapter Advisers



Brooklynn Gross
FCCLA's LTT

REGISTRATION OPTIONS

Register online at mtfccla.org

\$75

Reserve places; add names by
September 1

\$150

Register your members
between September 2-15

LODGING

- Billings Hoel & Convention Center
- \$115 per quad room plus taxes; includes free breakfast
- To register, visit <https://billingshotelmt.com> or call 406-248-7151. Use code 59383
- Room block is released September 1

REGISTRATION INCLUDES:

Registration fee includes conference materials, dinner Sunday, lunch Monday, and an FCCLA beanie!



Adviser First Time Attendee Scholarship 2024



Join us at the 2024 Fall Leadership Rally!

Learn, participate, and network!
Chapter advisers who have never attended the
Fall Leadership Rally are eligible to apply for a
\$100 scholarship.
Learn more and apply [here](#) by
August 15, 2024

Applicant Criteria

- Commitment to affiliate a chapter by October 1 ✓
- First Time Attendee to Fall Rally ✓
- Registered to attend Fall Rally ✓
- Commitment to participate in
conference activities ✓
- Registered to participate in
Adviser Communities ✓
- Encouraged to attend your
district's Fall Meeting ✓
- Apply by August 15, 2024 ✓

Montana Chapters have four affiliation options to choose from. This includes three packages that allow Perkins Funding as payment to mitigate chapter fundraising and individual payment participation barriers for students and families, along with an option exclusively for middle-level chapters, serving students up to grade 9.

1 TRADITIONAL AFFILIATION

This is a continuation of past membership affiliation processes. Each student grades 6-12 who engages with or benefits from FCCLA programming is affiliated. Affiliation dues are paid from chapter fundraising or an individual/family fee.

\$ NATIONAL DUES \$9 per person Minimum of 12 individuals	+	\$ STATE PER PERSON DUES \$9 per person No Minimum	+	\$ STATE CHAPTER DUES \$65 per chapter Flat rate to support State Officer Programming
--	---	---	---	--

2 MIDDLE LEVEL PACKAGE

27 or more members, grade 9 or younger.

\$ NATIONAL DUES \$250	+	\$ STATE DUES \$135 (based on 15 members; over 15 members are free)	+	\$ STATE CHAPTER DUES \$65 per chapter Flat rate to support State Officer Programming
----------------------------------	---	--	---	--

Email Tracey to obtain the chapter fee waiver code!

**\$450
TOTAL**

**USING THIS PACKAGE REQUIRES A SEPARATE CHAPTER AFFILIATION*
**THE CHAPTER FEE IS WAIVED FOR SCHOOLS ALSO AFFILIATING A SEPARATE HIGH SCHOOL CHAPTER.*
**PERKINS FUNDING MAY BE USED TO PAY WITH THE MIDDLE LEVEL PACKAGE*

3 TOP 25 AFFILIATION PACKAGE

Up to 25 members.

\$ NATIONAL DUES \$395	+	\$ STATE DUES \$180 (this includes 5 <u>free</u> memberships)	+	\$ STATE CHAPTER DUES \$65 per chapter Flat rate to support State Officer Programming
----------------------------------	---	--	---	--

**\$640
TOTAL**

MEMBERSHIP PACKAGES #3 & #4

Membership packages include numerous chapter adviser and student benefits.

- Flat-rate payment can occur via **Perkins Funding**, eliminating per-member dues solicitation and enhancing equity by reducing participation barriers.
- Chapters receive a National FCCLA program of their choice with 70+ lesson plans to integrate FCCLA into the classroom (\$75 value).
- Free National FCCLA Chapter Adviser affiliation (\$9 value).
- One (1) Adviser Academy Registration (\$90 value).
- One (1) Lifetime Alumni & Associates membership for any one of their choice (\$150 value).

**\$325
VALUE**

4 BIG SKY UNLIMITED AFFILIATION PACKAGE

Unlimited chapter members.

\$ NATIONAL DUES \$775	+	\$ STATE DUES \$405 (based on 45 members; over 45 members are free)	+	\$ STATE CHAPTER DUES \$65 per chapter Flat rate to support State Officer Programming
----------------------------------	---	--	---	--

**\$1245
TOTAL**

LONG-TERM BENEFITS FOR THE TOP 25 AND BIG SKY PACKAGES

- **Chapter Benefits:** Montana CTE funding provides \$400 for existing chapters + a per-member allocation. Increased 2024-25 membership will increase your 2025-26 CTE funding allocation.
- **State Benefits:** House Bill 86 funding, which comprises most of FCCLA state funding, is heavily based on membership. Increased statewide membership means additional funding to support chapter advisers and provide student leadership opportunities.

