

# Leadership Rally

October 2-4, 2016



## Agents of Change

*Unlimited Possibilities*



Bozeman, MT



## 2016-17 State Executive Council



Seriously... The Leadership Rally is **guaranteed** to strengthen chapter programming with effective, hands-on, training and resources for members and advisers.

**Members** will become stronger chapter leaders with the tools, knowledge and desire to "own" their chapters. They will learn techniques to engage members, effectively lead meetings, develop and implement programs of work and much more.

**Advisers** will start the year off feeling confident and invigorated as they learn about the new tool for tracking Service Hours, learn about exclusive fundraising opportunities, identify ways to manage competitive events, explore the newly updated National Programs and more.

The 2016 Leadership Rally is hosted in collaboration with the Montana State University College of Education, Health and Human Development.

## Who Should Attend?

### Chapter Leaders



Description: Build confidence as a leader as you reach your potential while learning more about FCCLA and enhancing your team building skills.

Target grade levels: 8-10 Maximum

Attendees: up to 2 per chapter\*

### Chapter Officers



Description: Improve your ability to use your personal brand to get results for your chapter, motivate team members and effectively run meetings.

Target grade levels: 10-12 Maximum

Attendees: up to 2 per chapter\*

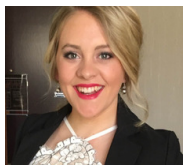
### Chapter Advisers



Description: Kick off a great FCCLA year while learning about programming including newly update national programs, a new fundraiser and new service hours tracking. You will also receive hands-on training for all components of chapter management.

*\*All District Officers are highly encouraged to attend . They do NOT count toward the chapter maximums.*

## ➔ The Risk Factor



By Cody Boyce

Cody's FCCLA experiences have allowed her opportunities to serve as a state officer and National Officer candidate. Her leadership resume also includes serving as a Montana FFA State Officer. Cody's energetic personality, passion for leadership and belief that everyone can reach unlimited possibilities makes her speaker that inspires people to reach new heights.

## ➔ Cinema Drive



By Kenneth Bain

Youth, by their nature, pursue excitement. Drugs, alcohol, dangerous driving & bullying lure them. Harmful choices lead to thousands of teen deaths & millions of injuries every year. Additionally, young people who learn positive job skills have a better chance of becoming productive members of society. LCE programs are unique by being designed to deal with those different challenges and hazards in a multi-year holistic manner. By using a set of revolutionary methods, we provide youth with knowledge & tools through the power of 3D, interactive multi-sensory technology, state of the art storytelling & with summary reports on how students were impacted by the program.

## ➔ FCS Careers



By MSU FCS Students

Do you enjoy helping people? How about teaching others? Learn from current MSU students addressing topics impacting young adults today. Attendees will also tour the MSU campus.



# MAKING THE DEANS LIST

*Latrell Armstrong, Focus Training*

Latrell Armstrong joined the FOCUS Training team over eight years ago. A native of Memphis, Tennessee, Latrell excels in empowering others to discover their unique leadership potential.

Latrell is a graduate of the University of Memphis with a Bachelor of Arts in Communication. While there, he held leadership positions in numerous organizations all while keeping the "Tiger Pride" spirit roaring as a drum major for the Mighty Sound of the South Marching Band. Determined to raise the enrollment and retention rate of minority men at the University of Memphis, Latrell cofounded Empowered Men of Color. Latrell left with many prestigious awards and honors, among them being named Mr. University of Memphis.

Identified as the top Research Specialist at FEDEX Trade Networks, Latrell became the Departmental Trainer and developed a training program for new employees. Later he was an Undergraduate Admissions Counselor for Barry University and served as advisor for many campus organizations.

Latrell is deeply committed to a philosophy of open-mindedness and transparency. He speaks candidly about the experiences that have transformed him and his life path to inspire leaders young and old to live with a spirit of acceptance and outreach.



# Chapter Leader & Chapter Officer Agenda

All sessions at the BestWestern GranTree Inn unless otherwise noted.

## Sunday, October 2

4:15-5:00 Registration

5:00-5:45 Montana FCCLA: Agents of Change

*By MTFCCCLA State Executive Council*

This get-up and move session will have you meeting FCCLA members from throughout Montana while exploring how FCCLA empowers you to be an agent of change in your world.

5:45-6:30 Dinner

6:30-8:00 Montana FCCLA: Unlimited Possibilities

*By MTFCCCLA State Executive Council*

Information packed round tables will keep you engaged while providing important FCCLA updates and the tools to disseminate information to your chapters.

Chapter Management: Sheridan Johnson, President

Parliamentary Procedure: Chloe Flynn, VP of Programs

Member & Adviser Recognition: Briley Cook, VP of Membership

Membership Recruitment: Jordan King, VP of Development

Social Media, Hali Kapperud: VP of Public Relations

Competitive Events: Baylee Sciuchetti, VP of Competitive Events

State Outreach Project Lead2Feed: Justin Machart, VP of Community Outreach

Financial Fitness: Christine Toavs, 1st Vice President

Chapter Tracking and Communication: Siri Pederson, VP of Finance

8:00-9:00 Making the Deans List

*By Latrell Armstrong*

Many people's lives have been changed by an interaction with one person. This person is usually a family member, teacher, coach, or counselor. How often has a person's life changed by an interaction with a total stranger? Latrell's encounter with Dean takes the audience on roller coaster of emotions from joy, to sorrow, to inspiration. The audience will be engaged from beginning to end as they continue to ask themselves "Can I Do More?" Latrell gives a heartfelt message about discovering the inner hurdles that hinder you from reaching your full potential. The audience will leave with the drive to reach out and support new student in a more authentic way.

## Monday, October 3

8:00-8:25 Welcome & Bequet Confections Fundraising

Learn about Montana FCCLA's new state-wide fundraiser that offers 40%+ profit margins for chapters!

### Chapter Leaders Track

8:30-9:20 GridWalk

*By Latrell Armstrong*

This activity is an all-time FOCUS favorite. Teams work together to navigate their way across the Grid while overcoming various road blocks. Map Masters and Scorekeepers provide the framework of direction for each team as they develop systems to communicate and achieve the goal. Grid Walk emphasizes the importance of taking risks, effective communication, and teamwork.

### Chapter Officers Track

The Risk Factor

*By Cody Boyce*

Do you have what it takes to be a secret agent? The most critical part in becoming an agent is understanding the risks that you will be taking every day. "The Risk Factor" will help you understand the difference between positive and negative risks, what risks you should take in the future, and give you the opportunity to take a risk of your own while you are at it. Take the next step in becoming an agent today!

Cinema Drive

*By Kenneth Bain*

Did you know that Montana has some of the highest highway fatalities in the nation? Newly updated this year is the FCCLA National Program: FACTS. Through this program, young people plan and carry out projects that help them and their peers make informed, responsible decisions about traffic safety. Learn about how traffic safety and other topics impacting teens today can be addressed through the power of a 3D, interactive multi-sensory technology.



# Chapter Leader & Chapter Officer Agenda

All sessions at the BestWestern GranTree Inn unless otherwise noted.

**Monday, October 3**

LEADERSHIP RALLY 2016

## Chapter Leaders Track

9:25-10:15 **Speak Up!**  
*By Latrell Armstrong*  
This public speaking session focuses on the development of a presentation, the technical tools a speaker can use, and give participants an opportunity to practice and perfect their new skills.

10:15-10:30 **Break**

10:30-11:20 **The Risk Factor**  
*By Cody Boyce*  
Do you have what it takes to be a secret agent? The most critical part in becoming an agent is understanding the risks that you will be taking every day. "The Risk Factor" will help you understand the difference between positive and negative risks, what risks you should take in the future, and give you the opportunity to take a risk of your own while you are at it. Take the next step in becoming an agent today!

### Cinema Drive

*By Kenneth Bain*  
Did you know that Montana has some of the highest highway fatalities in the nation? Newly updated this year is the FCCLA National Program: FACTS. Through this program, young people plan and carry out projects that help them and their peers make informed, responsible decisions about traffic safety. Learn about how traffic safety and other topics impacting teens today can be addressed through the power of a 3D, interactive multi-sensory technology.

11:25-12:15 **The Risk Factor & Cinema Drive**  
Repeat 8:30 session with students attending the opposite workshop.

12:20-1:15 **Lunch: Chapter Mission Planning**

Advisers and members will work together to apply what they have been learning and create a plan of work for chapter organization activities including recruiting and retaining members, fundraising, meeting organization and project management.

1:15-2:10 **Tools of the Trade (Technology)**

Advisers and members will explore how technology can save time while enhancing communication. In addition, individuals will create their chapter account and learn about NobleHour; Montana FCCLA's new method for tracking service hours online and using an app!  
*Each chapter is encouraged to bring one laptop or iPad.*

2:10-3:00 **Travel to Montana State University**  
Parking passes included in registration

3:00-3:45 **Say Yes to FCS Workshops & Campus Tour**

4:00-4:45  
*By MSU Admissions & Montana State University Family & Consumer Sciences Students*  
Do you enjoy helping people? How about teaching others? Learn from current MSU students about the variety of career opportunities (with huge demand for trained workers) available from the Montana State University Health and Human Development Department. These breakout sessions are designed to not only address topics impacting young adults today but to also identify Competitive Events may have a passion for competing up and move as they tour the MSU campus. Attendees will attend one breakout session. Please indicate top preferences during registration. in during the State Leadership Conference. Attendees will also get up and move as they tour the MSU Campus.

Half of the students will attend a campus tour while the other half attends a MSU FCS educational session. The groups will then swap.  
Workshop preference can be indicated when registering.

## Chapter Officers Track

**The Risk Factor & Cinema Drive**  
Repeat 8:30 session with students attending the opposite workshop.

### Leadership Inc.

*By Latrell Armstrong*  
Participants form a start-up company to create a working prototype of a functional innovative product. Throughout the process they focus on defining roles and responsibilities on a team, delegation and empowerment.

### Styles of Success

*By Latrell Armstrong*  
Are you a direct drill sergeant or a smooth political persuader? Your leadership style helps determine how you interact with and motivate others. This intriguing activity allows participants to maximize their own style and learn how to work well with the variety of styles represented on teams.



# Chapter Leader & Chapter Officer Agenda

All sessions at the BestWestern GranTree Inn unless otherwise noted.

## FCS Workshop 1:

### *#Body Battle*

When will my reflection show who I am inside?  
A large percent of both male and female high school students deal with negative body image. Come visit with us about how media affects body image, how self-confidence plays a role, and how we can make a change.

## FCS Workshop 2:

### *Adulthood: Things I Wish I Had Known*

Adulthood is like looking both ways before crossing the street, but still getting hit by an airplane. Going off to college brings a wave of new experiences and stressors. In a world of new opportunities, it is important to prioritize your time and resources in a way that is most beneficial for your overall well-being. This workshop focuses on practical strategies for handling the stressors that come with college.

## FCS Workshop 3:

### *I'm Late, I'm Late*

It's Wednesday night, you have an AP English exam, a Chem lab and Calculus homework due tomorrow. To top it off, your favorite Netflix show just added the new season you've been waiting for, for over a year. Feeling overwhelmed and unprepared, Netflix wins once again... Does this ring a bell? Time management is a lifelong skill one will employ throughout the lifetime, and is one that many find difficult to learn without help. Help has arrived! Come explore research-backed ways to best help you prioritize and succeed in all aspects of your life.

## FCS Workshop 4:

### *Your Snap Story*

What's in your snap story? Friends? Family? Food? Even pets? Social media is everywhere. How does the time you spend add to or take away from the real life experiences happening around you? Come learn how to positively impact your life and relationships using interactive technology.

## Monday, October 3

5:15-7:15

### District Dinner

*Location to be identified by District President*

Meet attendees from your district while you dine at some of Bozeman's greatest establishments!

7:30-9:00

### District Officer Training

*By the State Executive Council & Latrell Armstrong*

Enhance your leadership skills while preparing to facilitate an informative and smooth district meeting.

Then, work with Latrell Armstrong to explore Creative Thinking Challenges: Brain-teasers, puzzles, enigmas? Tackling unusual and challenging problems is something every leader needs to deal with. Creative Thinking Challenges is a crash course in creative problem solving and time management.

## Tuesday, October 4

8:00-8:30

### Say Yes to FCS

Explore how members can be agents of change as they enhance the well-being of individuals and families through family and consumer sciences.

8:30-9:30

### Service: Mission Planning Time

During this hands-on session, chapters will work together to explore how the new National Programs Financial Fitness & FACTS. In addition, chapters will examine how the State Outreach Project; Lead2Feed will enhance leadership skills in youth while empowering chapters work together to end hunger in their community.

9:30-10:15

### Evolution

*By Latrell Armstrong*

Participants break out of their comfort zone while they work their way up the evolutionary ladder in this high-energy activity. We focus on the importance of evolving and growing our organizations as well as individual leadership skills.

10:15-10:30

### Creating Change Around the World

*By State Executive Council*

Explore how the heart is the primary driver of optimal human performance and how FCCLA empowers you to be an agent of change as you make a difference in your school and community.



# Chapter Adviser Agenda

All sessions at the BestWestern GranTree Inn unless otherwise noted.

## Sunday, October 2

- 4:15-5:00 Registration
- 5:00-9:00 Montana FCCLA: Agents of Change

With chapter members. See Chapter Officers and Leaders agenda for details.

## Monday, October 3

- 8:00-8:25 Cinema Drive  
*By Kenneth Bain*  
Did you know that Montana has some of the highest highway fatalities in the nation? Newly updated this year is the FCCLA National Program: FACTS. Learn about how traffic safety and other topics impacting teens today can be addressed through the power of a 3D, interactive multi-sensory technology. This opportunity is FREE to 15 Montana schools this fall.
- 8:30-9:00 FCCLA: Family  
Get to know one another while experiencing activities that can be integrated into chapter meetings to help keep the energy and excitement going!
- 9:00-10:00 Fundraising: Featuring Bequet Confections  
Montana FCCLA has partnered with Bequet Confections to create a fundraising opportunity exclusive to Montana FCCLA chapters. Advisers will learn how their chapters can earn 40%+ profit margins when selling this award winning caramel just in time for the holidays! Time will also be dedicated to exploring innovative ideas that have been successful with Montana Chapters.
- 10:00-10:30 Chapter Management: Organization  
In this interactive session advisers will identify techniques guaranteed to empower chapter officers to lead while streamlining communication. In addition, best practices when using a point system to enhance accountability among all members will be explored.
- 10:30-10:45 Break
- 10:45-11:30 Competitive Events & State Leadership Conference  
Are you looking for strategies to mentor students completing competitive events while not becoming overwhelmed yourself? Experienced advisers will guide this session with calendar planning tips, resources to teach the FCCLA Planning Process and more! In addition, 2016-17 changes to Montana Competitive Events and new opportunities at the 2017 State Leadership Conference will be released!
- 11:30-12:15 Chapter Management: Student Leadership  
FCCLA has numerous opportunities to empower students to enhance their leadership abilities. This session identifies strategies for electing and managing chapter officers including end-of-year recognition. In addition, the 2016-17 District Officer Application will be reviewed and the proposed revisions to the state-wide election process discussed.
- 12:20-2:10 Lunch: Chapter Mission Planning & Technology
- 2:10-3:00 Travel to MSU
- 3:00-5:00 Curriculum Integration (at MSU)  
This dynamic round table session will have you swirling with ideas as you explore techniques for integrating STAR and Skill Demonstration Events into your FCS classroom. Integrating competitive events into instruction is a great way to incorporate project-based learning while promoting FCCLA to potential members. Advisers hosting the round tables will share how they used the STAR or Skill Demonstration Event, instructional materials and ideas for customizing events to meet the unique needs of your environment.
- 5:15-7:15 District Dinner
- 7:30-8:30 Montana FCCLA Mentor Program  
Collaboration time for FCCLA Mentors and Mentees to get to know one another, establish a communication plan and more!

## Tuesday, October 4

- 8:00-10:30 Montana FCCLA: Agents of Change

With chapter members. See Chapter Officers and Leaders agenda for details.



## Online Registration



Due September 19, 2016  
No late registrations accepted.  
Space is limited and based on a first-come, first-served basis.



\$55; regardless of track  
Includes an attendee item, event materials, dinner Sunday, breaks and lunch on Monday.



Register online at: <https://www.registermychapter.com/fccla/mt-flc>  
Username: Chapter ID  
Password: (same as your membership affiliation)

Contact Nicole if you need help with your username or password!



Invoices are immediately available in the registration system.  
NEW! Montana FCCLA will be accepting credit cards as payment during registration.  
Make checks payable to "Montana FCCLA" and mail them directly to:  
Connie Dempster, Bookkeeper, Box 20996, Billings, MT 59104



Payment must be made or a purchase order on file before attending the Leadership Rally.

## Policies

- **Space is limited** and based on a first-come, first served basis.
- **Chaperone policy:** 1 adult per 8 students
- **Affiliated member:** Attendees do not need to be affiliated members before attending; however it is highly encouraged.
- **Cancellation:** Refunds are not available for cancellations. Substitutions may be made online until September 19.
- **Code of Conduct:** Advisers are responsible for collecting signed Code of Conduct forms (available at [www.mtfccla.org](http://www.mtfccla.org)) for each attendee.
- **Attendees:** A chapter may send up to 2 members for the Chapter Leader Track + up to 2 members for the Chapter Officer Track + and Adviser + any district officers (including State Officer).

## Lodging



- Best Western GranTree Inn
- 406.587.5261
- \$95+tax – includes a breakfast buffet
- Montana FCCLA room block ends 9/21/16

## Sessions

- All sessions held at the Best Western GranTree Inn unless otherwise noted.
- Parking passes will be provided for Monday afternoon when on the Montana State University Campus.

## Dress Code

- The Montana FCCLA dress code must be followed. Students: Red, white or black polo or oxford shirt; may include FCCLA logo. Chapter polo's in the school colors may be worn if they have a collar and the FCCLA emblem.
- Black or khaki slacks or skirts that are two inches above the knee.
- Nice shoes.
- Adults: Business casual or student dress code.

