

HOTELS

Cut-off date: 02/19/19

Call for all reservations - ensure you book in the FCCLA block.

We need to use a large number of hotels until we create goodwill and fill our blocks at all hotels. Use the room blocks and do not block outside of it.

Chapters are not required to have lodging.



Breakfast Provided



Premier Property



Breakfast Coupon
Provided



Holiday Inn



5 Baxter Ln, Bozeman, MT 59715

Double Room (1p-\$100, 2p-\$108, 3p-\$116,
4p-\$124)

Phone: 406-585-9300

2 miles to MSU

50 rooms Thursday, 50 rooms Friday



Country Inn & Suites



5997 E Valley Center Rd

Double Room - Flat rate of \$94.00 plus tax
(up to 4 people allowed per room)

Phone: 406-586-2230

3 miles to MSU

48 rooms Thursday, 48 rooms Friday



Holiday Inn Express & Suites

2305 Catron St

Double Room - Flat rate of \$95.00 plus tax
(up to 4 people allowed per room)

Phone: 406-582-4995

3 miles to MSU

15 rooms Thursday, 5 rooms Friday



La Quinta

620 Nikles Dr

Double Room - Flat rate of \$89.00 plus tax
(up to 4 people allowed per room)

Phone: 406-585-9300

2.3 miles to MSU

15 rooms Thursday, 15 rooms Friday



Comfort Suites

2515 Catamount St

Double Room - Flat rate of \$99.00 plus tax
(up to 4 people allowed per room)

Phone: 406-587-0800

3.2 miles to MSU

25 room Thursday, 25 rooms Friday



Hampton Inn

75 Baxter Ln

Double Room - Flat rate of \$95.00 plus tax
(up to 4 people allowed per room)

Phone: 406-522-8000

2.3 miles to campus

25 rooms Thursday, 10 rooms Friday



HOTELS



Comfort Inn

1370 N 7th Ave

Double Room - Flat rate of \$94.00 plus tax
(up to 4 people allowed per room)

Phone: 406-587-2322

1.9 miles to campus

20 rooms Thursday, 20 rooms Friday



GranTree

1325 N 7th Ave

Double Room - Flat rate of \$120.00 plus tax
(up to 4 people allowed per room)

\$10.00 Breakfast vouchers given 

Phone: 406-587-5261

1.9 miles to campus

20 rooms Thursday

Springhill Suites



1601 Baxter Ln

Double Room - Flat rate of \$129.00 plus tax
(up to 4 people allowed per room)

Phone: 406-586-5200

2.4 miles to MSU

10 rooms Thursday, 10 rooms Friday

Residence Inn



6195 E Valley Center Rd

King Suite with Pull-Out couch bed - Flat rate
of \$119.00 plus tax

(up to 4 people allowed per room)

Phone: 406-522-1535

3.3 miles to campus

50 rooms Thursday

C'Mon Inn



6139 E Valley Center Rd

Double Room - Flat rate of \$94 plus tax
(up to 4 people allowed per room) 

Phone: 406-587-3555

4.0 miles to campus

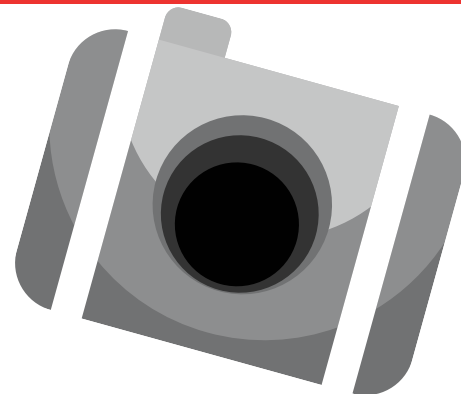
50 rooms Thursday and Friday

CHAPTER RECOGNITION

During the general sessions, MT FCCLA would like to recognize chapters for their service and leadership.

Share Your Awesomeness!

Share a picture and brief description of your chapter in action while you Rock the Red!



All information should be submitted online at: www.mtfccla.org

Deadline: February 15