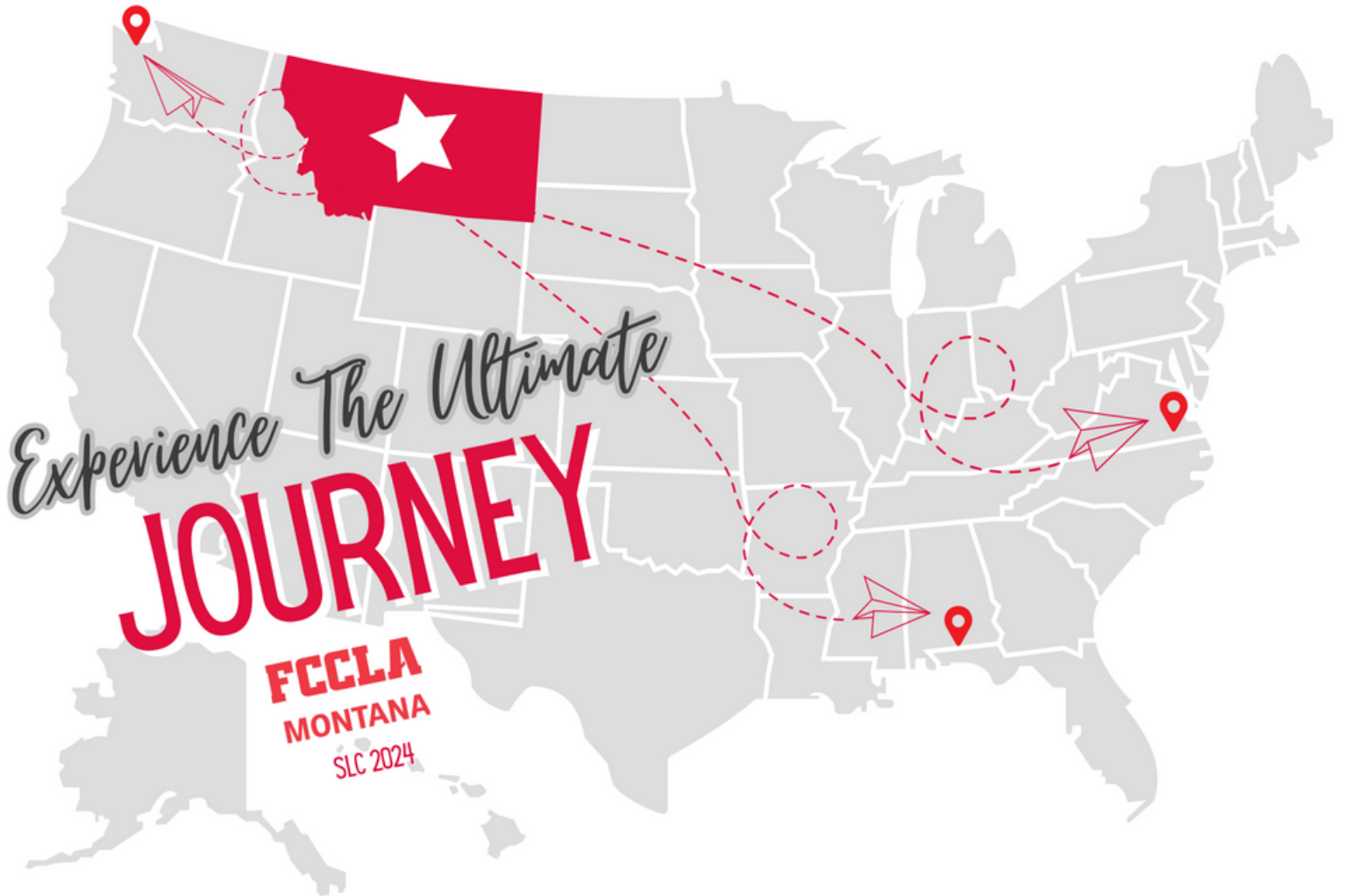


2024 STATE LEADERSHIP CONFERENCE

UPDATED JANUARY 12, 2024



MARCH 14-15

MONTANA STATE UNIVERSITY





2023-2024 STATE EXECUTIVE COUNCIL

The 2023-24 State Executive Council would like to invite you
Experience the Ultimate Journey
at Montana State University, March 14 and 15, 2023 for the
Montana FCCLA State Leadership Conference.

In addition to competing, meeting new friends, and enhancing your leadership skills,
this year's conference promises to be unforgettable!

This information packet contains everything needed to register for the conference.

Please read carefully to plan your trip to Bozeman.

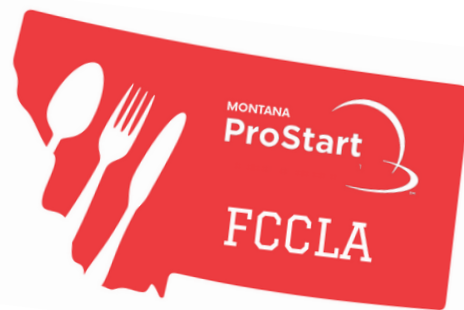
We look forward to seeing you!

LET'S GO

ADVENTURE



2023-24 MONTANA FCCLA/PROSTART CULINARY ARTS COMPETITIONS



Thursday, March 14 at Gallatin College on the MSU Campus.



ProStart teams:

All teams will complete the registration form. To register, go to the Montana ProStart page at <https://mtfccla.org/montana-prostart/> and scroll to the bottom. The link labeled “2023-24 Montana ProStart Competition Registration form” will take you to a Google Form to register.-

We can accommodate **eight** teams; first come, first served. Participants must be from a ProStart confirmed program

All teams will follow the Montana ProStart Invitational Rules



FCCLA Chapters: Culinary-Related STAR Events and Skill Demonstration Events will also take place on Thursday, March 14

8:00-4:00

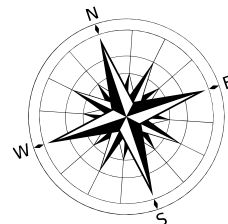
ProStart Culinary
ProStart Management

8:00-11:00

FCCLA Baking & Pastry

11:00-4:00

FCCLA Culinary Arts
FCCLA Culinary Knife Skills
FCCLA Culinary Food Art
FCCLA Pastry Arts
FCCLA Culinary Math Management



Advisers of all registered culinary entrants will receive an email confirmation with their competition and check in times prior to the competition.

THERE'S MORE!

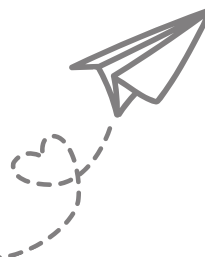
All results from Thursday are announced at the 7:15 pm General Session in the SUB

ProStart teams are invited to participate in FCCLA sessions Thursday afternoon. We offer many opportunities on Friday as well; consider affiliating ProStart members to enjoy sessions for both days!

Email Tracey at director@fccla.org for assistance with new chapters

FCCLA entries will also register for the State FCCLA Conference

For more details, visit the Montana ProStart page at <https://mtfccla.org/montana-prostart/>



FEATURED SPEAKERS

KEYNOTE: TEMPERED WITH FIRE: BECOMING STRONGER & BETTER EQUIPPED



As many of us understand, life is truly a roller coaster ride. We all face our highs and lows, and some of us encounter unexpected turns. We sometimes find ourselves getting burned by life's difficulties, and these burning moments can often leave us scarred. Cody Byrnes shares his personal experience of how his life suddenly changed while he was stopped at a red light and rear-ended; he was severely burned and almost left for dead. He speaks about his life-altering experience, and the importance of focusing, and on what really matters in life. Through his story, Cody gives analogies of the fires that life's challenges bring – whether in our personal lives or our careers – and how that same fire can temper our lives to make us stronger. Also, learn how scars, either physical and emotional, can be used to our advantage and how they serve others once we break free of yesterday's troubles. Prepare to experience an engaging presentation that will uplift and propel you to live your life to its fullest potential.

FCCLA: YOUR FUTURE & YOU

FCCLA: Your Future and You. Led by Leadership Training Team member, Brooklynn Gross. Get ready to dive head first into the organization that will push you to excel, help you sharpen your talents and build you to be the best leader you can be!

Friday, 1:00-2:45

Chapter maximum: 3

Fee: \$10fee + conference registration

Eligibility: Students grades 7-10



FEATURED SPEAKER

LEADERSHIP SEMINAR

LEADERSHIP IN ACTION
FRIDAY, 9:30-11:30

***Pre-registration required.**

CODY BYRNES



Often, leaders focus on clarity, execution and effective communication to become a great leader. However, they overlook the commitment to lead courageously. Usually, this can be seen where a leader is vocalizing an idea, yet, the project fails to come to fruition. No one rallies behind their project, deadlines are missed, and people are put onto performance review. The unfortunate reality is that the leader often misses the fundamental proponent of driving the team - The Why behind the vision. Before anything can be accomplished, a motivated leader must have a clear vision of where they are headed and what it is that they are seeking to accomplish. Cody has spent the past 15 years leveraging Vision Drive Leadership to give people hope from youth to professionals working in corporate. From this journey, he learned no matter what the vision is, we must keep in mind that there will be unexpected disruptions, obstacles, and rapid changes to which we must adapt as we move forward. Ultimately, what keeps him moving forward, and what leaders can use is their 'why', the core behind Vision Driven Leadership.

ULTIMATE JOURNEY WORKSHOPS

FROM STUCK TO EMPOWERED: MAINTAINING MOMENTUM THROUGH TRYING TIMES, FRIDAY, 1:00-1:45

**Open to anyone, but space is limited!*

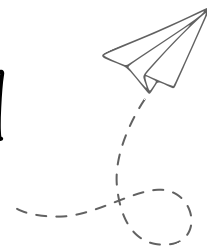
In today's demanding and often stressful working environments, a strong mindset is imperative to overcoming obstacles and surpasses life's challenges. How do leaders and employees maintain a strong mindset during trying times and avoid getting stuck? Through his research in psychology and personal triumph, Cody was able to transcend a forever life-changing experience into tangible steps that can work for just about anyone. His story is designed to empower your team to create the necessary shifts to go from stuck to empowered.

HOW TO USE HUMOR AND CREATIVITY IN YOUR MESSAGE TO BREAK DOWN BARRIERS, REDUCE STRESS, MAKE THE WORKPLACE FUN, FRIDAY 2:00-2:45

Effective communication is arguably the most important tool that we have as humans. The workplace is no exception to this premise. Humor, one of the most popular forms of communication, is not often paraded around the workplace, but it should be from its unexpected slew of benefits. This session will explore ways people can do simple things to add that extra chuckle to drive home an essential point. Anyone can be funny, it's just knowing how.



SLC WAYS TO PARTICIPATE, PAGE 1

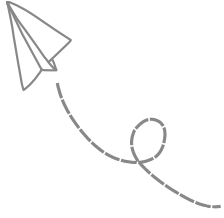


A variety of attendance options are available.

Attendees must be registered for at least one of the following activities.

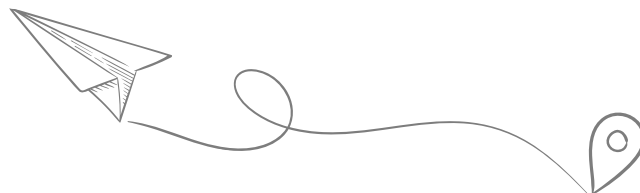
Review the role descriptions to assign students to the appropriate role.

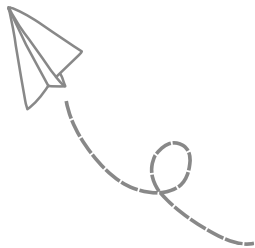
Participation Option	Description	Chapter Maximum	Fee	Eligibility
Leadership Seminar	Hear from keynote speaker, Cody Byrnes, as he shares the secrets for developing strong leadership traits that will serve members and their chapters.	Unlimited. Total attendance is limited and will be filled on a first-come, first-served basis.	\$25 fee + conference registration	All attendees. If an individual is participating in multiple activities, schedules will be adjusted as much as possible to minimize time conflicts.
FCCLA 101	FCCLA: Your Future and You. Led by Leadership Training Team member, Brooklynn Gross. Get ready to dive head first into the organization that will push you to excel, help you sharpen your talents and build you to be the best leader you can be!	3 per chapter	\$10 fee + conference registration	Students grades 7-10
STAR Event or Skill Demonstration Event	Over 35 competitive events are offered to provide members with the opportunity to expand their leadership potential and develop skills for life necessary in families, communities, and workplaces.	Unlimited. Total attendance is limited and will be filled on a first-come, first-served basis.	\$7 event fee per person + conference registration (exception: Culinary Arts & Baking & Pastry which have a \$20 event fee + conference registration)	See the Montana FCCLA Competitive Events Manual and National FCCLA Competitive Events guide for eligibility.
Event Assistant	Assist with facilitation of a STAR Event. Typical duties include timing entrants as they compete and escorting entrants to and from their competition station.	2 per chapter	Conference registration	All members are eligible
Skill Demonstration Evaluator	Use the FCCLA Rubric to be a part of an evaluation team for Skill Demonstration Event Entrants.	3 per chapter	Conference registration	Evaluators must be Seniors who have previously competed in a STAR event at SLC.



SLC WAYS TO PARTICIPATE, PAGE 2

Participation Option	Description	Chapter Maximum	Fee	Eligibility
Capture Crew	Be a part of a media team that photographs all aspects of State Leadership Conference. Individuals must have photography experience and be able to provide their own camera and laptop.	1 per chapter	Conference registration	All members are eligible
Bold Leader: Session Presenter	Members are encouraged to be bold by demonstrating their leadership abilities by conducting a workshop. Attendees must complete the online workshop presenter form.	None	Conference Registration	All members
Families First Outreach Project Training	Attend engaging sessions designed to help generate ideas you can take back to your chapter for the 2024-25 State Outreach Project.	2 per chapter	Conference Registration + \$10	All members are eligible; advisers are encouraged to choose a strong leader for this session that will shape your chapter's program of work
Industry Immersion Tour	Hop on the bus with us and visit three Bozeman businesses to learn what it takes to get hired and keep a job, as well as a behind the scenes look at FCS related businesses.	2 per chapter. Space is limited; registration available on a first-come, first-served basis.	Conference Registration + \$10	Pre-registration is required. Tour will occur Friday afternoon from 12:30-4:15





TENTATIVE CONFERENCE AGENDA

Thursday, March 14

***preregistration required**

Time	Time commitments for each role are indicated in this agenda to support advisers and students in determining conference schedules				
8:00-9:00	ProStart Culinary & Management Competition*	Baking & Pastry STAR Event*			
9:00-10:00					
10:00-11:00					
11:00-12:00		Culinary Arts STAR Event Culinary Food Art Culinary Knife Skills Pastry Arts Technical Decorating Skill Events*	Lunch provided for ProStart Confirmed Competitors --Optional purchase for all other attendees	Advisers pick up registration materials	Conf Expo
12:00-1:00					
1:00-2:00			Lead Cons. Orientation	Chapter & District Officer Training	Event Asst. Orientation
2:00-3:00					Capture Crew Orientation
					Outreach Project Training* Session 1
					Workshop Session 1
					Workshop Session 2
3:00-4:00	Opening Session				
4:00-5:00					
5:00-6:00	SEC Joint Dinner		Attendee & Chaperone Dinner	Adviser Activities	
6:00-7:00					
7:00-8:00	Second General Session				
8:00-9:00	District Meetings				

Time										
8:00-9:00	Event Setup									
	Evaluator Orientation									Workshop Session 1
9:00-10:00	STAR and Skill Demonstration Events*							Incoming State Officer Training	Workshop Session 2	
10:00-11:00		Leadership Seminar*							Workshop Session 3	
11:00-12:00									Workshop Session 4	
12:00-1:00		Attendee Lunch							Outreach Project Training* Session 2	
1:00-2:00			Keynote Workshop Session 1	FCCLA 101*	Industry Immersion Tour*				Workshop Session 5	
2:00-3:00			Keynote Workshop Session 2						Workshop Session 6	
3:00-4:00									Wellness Room	
									Rec Room	
4:00-5:00									Service Room	
5:00-6:00	SEC Joint Dinner	Attendee & Chaperone Dinner								
6:00-7:00										
7:00-8:00	Recognition Session									

MAKE THE MOST OF YOUR ULTIMATE JOURNEY



CLAIM YOUR SERVICE SWAG

Chapters can receive a Montana FCCLA Swag Bag full of spirited conference goodies by:

- Sharing 3-5 photos of chapter projects and events with Tracey at director@mtfccla.org AND
- Submitting Chapter Service Hour reports by February 15
- Photos will be shared on the big screen during the conference and your Swag Bag will be ready for you at the conference registration table

CONTRIBUTE

Bring your change and make a change! We will hold a Miracle Minute at our General Session to benefit Farm in the Dell, as well as on-site volunteer projects on Friday from 3:00-4:45.

ENJOY!

The MSU Rec Room will be open from 2:00-4:45 on Friday. Make some new friends and enjoy games and relaxation.

SHOP

Check out the Montana FCCLA Store and place your orders with your chapter registration. Orders will be ready to pick up at SLC.

EXPLORE

Check out the Conference Expo! Visit with representatives from numerous colleges and career training programs to learn about options for your future! The Conference Expo will be available on Thursday from 11:30-2:45. Stay tuned for information about our partners!

RECHARGE

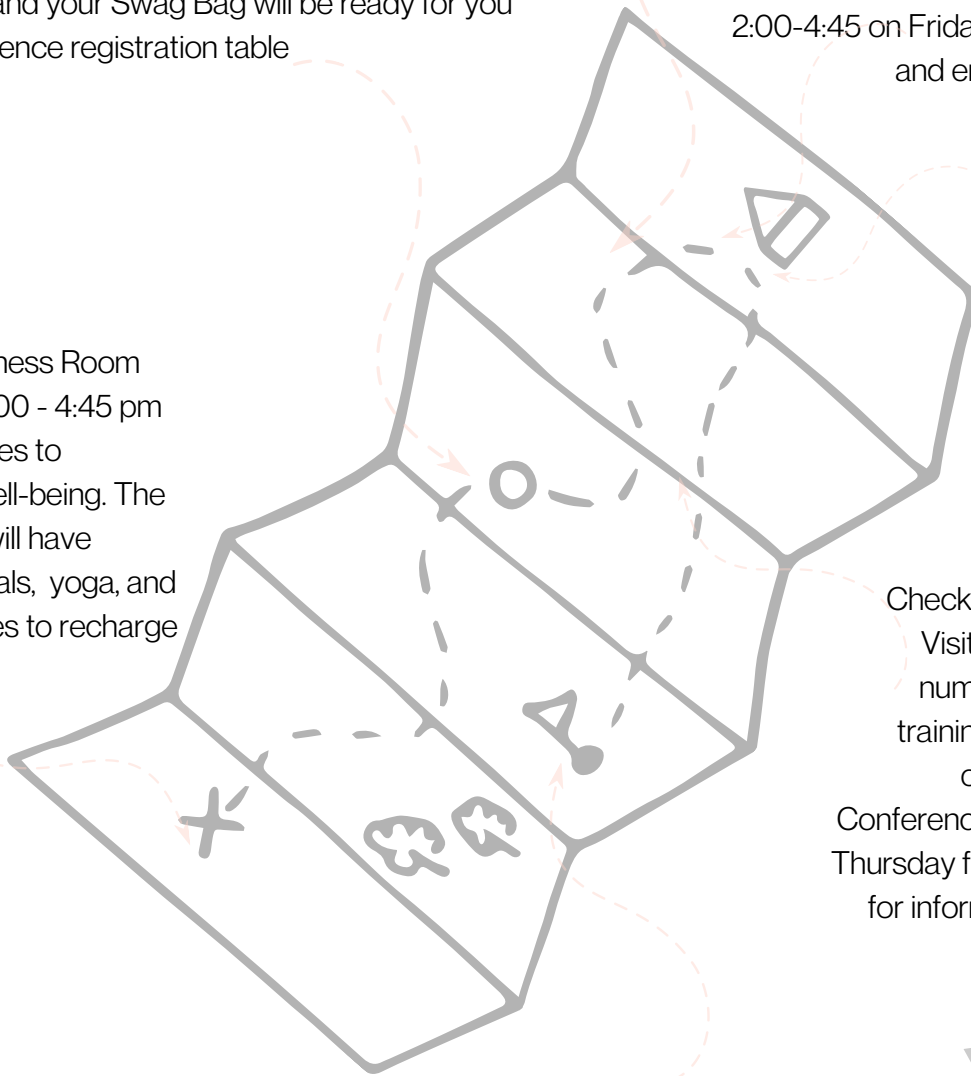
Look for the Wellness Room on Friday from 3:00 - 4:45 pm and learn strategies to maximize your well-being. The Wellness Room will have stress-relief animals, yoga, and other opportunities to recharge

ENGAGE

Look for your opportunity to collect prize tickets throughout the conference. Add your name and chapter to the tickets and place them in prize drawings announced at each general session.

Help your chapter be recognized on the leaderboard on our social media accounts as well as at the general sessions! Download the Goosechase app before heading to the conference so you won't miss out on any of the opportunities!

Even more engagement options will be available on Friday from 3:00-4:45



**Download the
Goosechase app prior
to the conference!**

REGISTRATION INFORMATION

Online Registration Closes February 10

mtfccla.org/conferences/state-leadership-conference/

ELIGIBILITY

Students must be *paid* members before they will be eligible to register. Pending membership payment not accepted.

Chapters must be in good standing at the district level with regard to financial obligations.

ACTIVITY

All students must be registered to participate in at least one SLC activity. Before registering in multiple events, consider the time commitments for each activity noted on the schedule.

REQUIRED FORMS

Advisers must have a signed Code of Conduct form for each student attendee. Forms can be found [here](#)

PROGRAMS

Each registered chapter will receive two copies of the conference program, as well as access to an electronic version. Additional copies may be pre-ordered with registration. for a fee.

AFFILIATION ERROR

If there was a spelling error, grade level error, or membership category change in membership; log into the membership system and click 'request change' next to the individuals name.

PAYMENT

Payment is due by March 8.

Credit cards accepted online.

Checks should be made payable to Montana FCCLA and sent to :

Montana FCCLA, Attn: Mark Hornby, 13241

Woodland Park Road, Suite 100, Herndon, VA 20171

REGISTRATION FEE

All students and adults (advisers and chaperones) must register. Registration is \$75 per person (fee waived for current state officers).

Additional fees may apply depending on SLC activity.

All attendees receive a t-shirt, dinner on Thursday, lunch on Friday and dinner on Friday.

CHANGES/CANCELLATIONS: BEFORE FEBRUARY 10

Advisers may log in to the registration system at anytime during open registration and make changes (edit events, add/delete attendees), etc.

CHANGES/CANCELLATIONS: AFTER FEBRUARY 10

Registration closes on **February 10**. **No changes may be made after this time;** registration and event fees are non-refundable.

Please complete the SLC Activity Change form as soon as possible.

Individuals may be dropped from attending or request a change to a consultant or Leadership Seminar role.

CHAPERONE POLICY

Individually, each chapter must provide adult chaperones willing to assist with conference activities based on the number of chapter members attending the SLC:

1-8 members need one adult; 9-16 members need two adults; 17-24 members need three adults; 25-32 members need four adults.

"Adult" is an adviser, teacher, parent, or alumni who attends the conference.

If your chaperone is unable to help with judging and other duties at the conference, you should not consider this individual as a chaperone.

Bus drivers must be available to help with other duties at SLC to be considered a chaperone.

Advisers who wish to release one chaperone from evaluating duties may secure four additional evaluators using the evaluator volunteer form

MIXED CATEGORY TEAMS

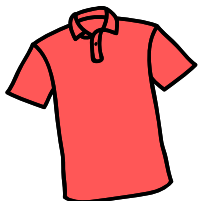
If a team is comprised of individuals in different level categories (Level 1, 2, or 3) contact Tracey for assistance registering at director@mtfccla.org



This dress code will be strictly enforced during the State Leadership Conference. Students who are NOT dressed accordingly will be required to change before participating.

View the entire dress code at mtfccla.org

DRESS CODE



ALL SLC ACTIVITIES (GENERAL SESSIONS, WORKSHOPS, CAREER FAIR, ETC)

Red, white or black polo or oxford shirt; may include FCCLA logo. Chapter FCCLA polos in the school colors may be worn if they have a collar and the FCCLA emblem. Black or khaki slacks or skirts that are two inches above the knee. Dress shoes.

COMPETITIVE EVENTS

Follow STAR and Skill Demonstration event specifications for dress and wear appropriate clothes for the nature of the presentation (includes professional attire).

If following the SLC dress code (noted above) khaki slacks are appropriate (black slacks are not required as indicated in the National FCCLA Competitive Events Manual).

ADULTS, CHAPERONES AND GUESTS

Business casual or follow the SLC Dress Code



EVENT EVALUATORS NEEDED

Over 150 volunteers are needed to evaluate the competitions.

If you or anyone you know can volunteer from 8:30 am-2:30 pm on Friday, March 15, please contact Tracey at director@mtfccla.org

Evaluators are provided with a hospitality room, lunch and free parking.

EVENT MATERIAL STORAGE

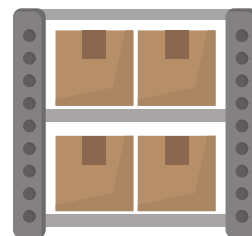
THURSDAY
12:00-4:30

Where: One room per competition building is available.

Host: One adult per building will be available to monitor the room.

FRIDAY
8:00-2:00

Responsibility: Event storage is at-your-own risk. The rooms will be locked overnight. Materials are not formally being checked in and out.



Be prepared for inclement weather. Display cases are recommended





HOTEL INFORMATION



Lodging accommodations are made with the specific hotel property by the Chapter Adviser. Chapters are encouraged to stay at the properties listed below. All prices shown are for two beds/four people per room.

C'MON INN - MT FCCLA HEADQUARTERS



ROOM WITH THE STATE
EXECUTIVE COUNCIL!

6139 E Valley Center Rd

Rate of \$150 plus tax for Thursday, \$170 for Friday.

Website booking available at <https://www.cmoninn.com/bozeman>

use code MTFCCCLA2024

Phone: 406-587-3555

4 miles to MSU

50 rooms Thursday and Friday

Released March 1, 2024

HAMPTON INN

75 Baxter Ln

\$171.00 plus tax

Phone: 406-522-8000

2 miles to MSU

10 rooms Thursday and Friday

Released February 16, 2024

DAYS INN

1321 N. 7th St

\$109 double queen plus tax

\$139 double queen suites plus

tax

Phone: 587-5251

2 miles to MSU

30 rooms Thursday and Friday

Released February 14, 2024

COMFORT SUITES

2515 Catamount St

\$219 plus tax

Phone: 406-587-0800 and

use the code: 4746772 or

book online

4 miles to MSU

30 rooms Thursday and Friday

Released February 20, 2024

LA QUINTA

620 Nikles Dr.

\$195 plus tax

Phone: 406-404-7383; mention FCCLA

2 miles to MSU

20 rooms Thursday and Friday

Released February 14 2024

BAYMONT INN

2020 Wheat Drive

\$110 plus tax

Phone: 414-6170; mention FCCLA

3 miles to MSU

25 rooms Thursday and Friday

Released February 14, 2024

MY PLACE HOTEL

5889 East Valley Center Road,

\$161.00 plus tax

Phone 406-586-8228

4 miles to MSU

15 rooms Thursday and Friday

Released February 13, 2024

COUNTRY INN & SUITES

5997 E Valley Center Rd

\$139.00 plus tax

Phone: 406-586-2230; mention FCCLA

3 miles to MSU

25 rooms Thursday and Friday

Book online here with the code VC42B6

Released February 15, 2024

QUALITY INN & SUITES

828 Wheat Dr,

\$195 plus tax

Phone: 406-282-1678; mention FCCLA

2 miles to MSU

30 rooms Thursday and Friday

Released February 14 2024

HOMWOOD SUITES

1023 Baxter Ln

\$181.00 plus tax

Phone: 406-587-8180

2 miles to MSU

10 rooms Thursday and Friday

Released February 16, 2024

ALL PROPERTIES
PROVIDE BREAKFAST

CHAPTER AWARDS

Be honored for your hard work, and honor the hard work of others. Apply for the following awards and scholarships today! **All applications are due February 15.**



STAR CHAPTER AWARD

Chapters with a well-rounded program of work receive a plaque to hang at your school and recognition at State Leadership Conference.

MONTANA FCCLA SERVICE RECOGNITION

Service is at the core of FCCLA's values and mission! Submit your chapter's service hours report and three photos of your chapter's service projects to earn **Service Swag Bags** for your members. The three chapters submitting the most service hours per affiliated member will receive recognition with the **Montana Service Hall of Fame Award!**



NATIONAL PROGRAM RECOGNITION

Earn some name badge swag by submitting National Program applications! For each National Program award application submitted by your chapter, each member attending will receive a conference name badge ribbon to wear at SLC. How many ribbons can your name badge handle?

ACTIVITY REPORTS - DUE MARCH 1

Any chapter who completed a Financial Fitness project and/or traffic safety programming in their community (even if they did not receive a grant) is encouraged to submit an activities report by March 1 to be eligible for the awards offered by our partners.

FINANCIAL FITNESS

STATE OUTREACH PROJECT
SUBMIT REPORT HERE



BlueCross BlueShield
of Montana

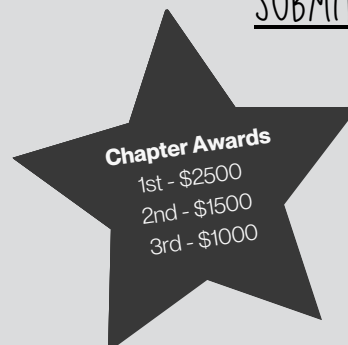


VISION ZERO

COMMUNITY OUTREACH PROJECT
SUBMIT REPORT HERE



VISION ZERO
zero deaths - zero serious injuries
MONTANA DEPARTMENT
OF TRANSPORTATION



INDIVIDUAL AWARDS & SCHOLARSHIPS



Be honored for your hard work, and honor the hard work of others.

Apply for the following awards and scholarships today!

All applications are available on the website and are due February 15.

FCCLA

ULTIMATE LEADER MEMBER AWARD

Montana FCCLA members that exhibit exemplary leadership by modeling the way, inspiring a shared vision, challenging the process, enabling others to act, and encouraging the heart are eligible for this award.



LEADERSHIP AND SERVICE SCHOLARSHIP

Montana FCCLA supports our graduates who are headed to their next adventure through the Leadership and Service Scholarship. Graduating members with a strong record of both leadership and service are eligible to receive funding to assist with post-secondary education expenses.

COMPETITIVE EVENTS SCHOLARSHIP

Members who have actively participated in Montana FCCLA Competitive Events for three or more years are eligible to apply for the Competitive Event Scholarship, to receive funding to assist with post-secondary expenses.

PROSTART

PROSTART ULTIMATE LEADER

Students in Montana confirmed ProStart programs who exhibit exemplary leadership by modeling the way, inspiring a shared vision, challenging the process, enabling others to act, and encouraging the heart are eligible for this award.



PROSTART LEADERSHIP AND SERVICE

Graduating students of confirmed ProStart programs who demonstrate leadership and service in their ProStart programs can receive funding to assist with post-secondary educational expenses.

ADVISERS

NEW ADVISER OF THE YEAR

Recognizes an adviser with five years of experience or less who invests in professional development and while building a strong chapter.

ADVISER OF THE YEAR

Recognizes a chapter adviser who inspires members to achieve their goals and build a strong program.

SPIRIT OF ADVISING

Recognizes chapter advisers who are constantly faithful, often quietly working behind the scenes to ensure the success of their students. Nominations may be made by anyone who works with FCCLA Advisers

PROSTART EDUCATOR OF EXCELLENCE

Recognizes a confirmed ProStart educator who goes above and beyond in the ProStart program.



Additional scholarship opportunities and adviser awards are available through [FCCLA](#) at the national level.

IMPORTANT DATES

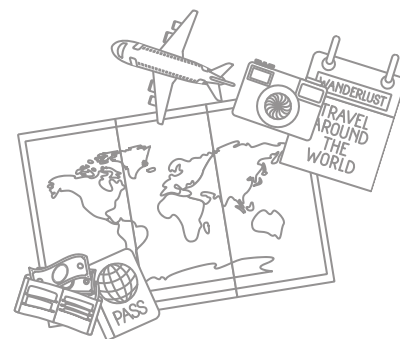
FEBRUARY



- 1: CONFERENCE REGISTRATION OPENS THROUGH FEBRUARY 10
- 1: MONTANA NATIONAL OFFICER CANDIDATE APPLICATION DUE
- 1: NATIONAL FCCLA ADVISER MENTOR & MASTER ADVISER NOMINATIONS DUE (IN THE PORTAL)
- 10: STATE LEADERSHIP CONFERENCE REGISTRATION AND STORE ORDERS DUE
- 12-16: NATIONAL FCCLA WEEK
- 15: MONTANA FCCLA AWARD APPLICATIONS DUE (SCHOLARSHIPS, CHAPTER STAR, ULTIMATE LEADER, ADVISER AWARDS, ALUMNI ACHIEVEMENT); CHAPTER SERVICE PROJECT PHOTOS MUST BE SUBMITTED TO EARN THE SWAG BAG FOR SLC

MARCH

- 1: POWER OF ONE RECOGNITION DUE (IN FCCLA PORTAL)
- 1: NATIONAL FCCLA SCHOLARSHIPS DUE
- 1: NATIONAL PROGRAM AWARD APPLICATIONS DUE (IN THE PORTAL)
- 1: STATE OUTREACH PROJECT AND COMMUNITY OUTREACH PROJECT ACTIVITY REPORTS DUE
- 1-14: STAR EVENTS TESTING WINDOW OPENS
- 8: SLC PAYMENTS DUE
- 14-15: ANNUAL STATE LEADERSHIP CONFERENCE, BOZEMAN



BEFORE SLC

COMPLETE THE STAR EVENTS ONLINE PROJECT SUMMARY FORM (IN THE PORTAL) AND THE STAR EVENTS ONLINE ORIENTATION (ON THE MONTANA FCCLA WEBSITE)

COMPETITIVE EVENTS - BEFORE YOU ARRIVE



MONTANA FCCLA COMPETITIVE EVENTS GUIDE

Review pages 6-7 closely for policies specific to Montana FCCLA.



NATIONAL FCCLA COMPETITIVE EVENTS GUIDE

Available to affiliated chapters in the membership portal. Access eligibility information, event policies and rubrics here.



STAR EVENTS: COMPLETE ONLINE PROJECT SUMMARY FORM

Available from the "Surveys" tab in the FCCLA Membership Portal. Only one submission per entry (team or individual) is required. Must be printed and included in portfolio or display.



STAR EVENTS: COMPLETE ONLINE ORIENTATION

Available starting March 1 on the Montana FCCLA Website. Upon completion, print the form and bring a hard copy be used during competition to award points on the Point Summary Form.



STAR EVENTS: ONLINE TESTING: MARCH 1-10

Any STAR Event requiring testing will be required to complete the test online during the testing window March 1-10. Detailed instructions will be distributed.

CAMPUS MAP & PARKING



PARKING

1 = Bus Parking
(South Fieldhouse Lot 15)

2 = Suburban and
Event Evaluator
Parking
(Parking Garage)

GENERAL SESSIONS

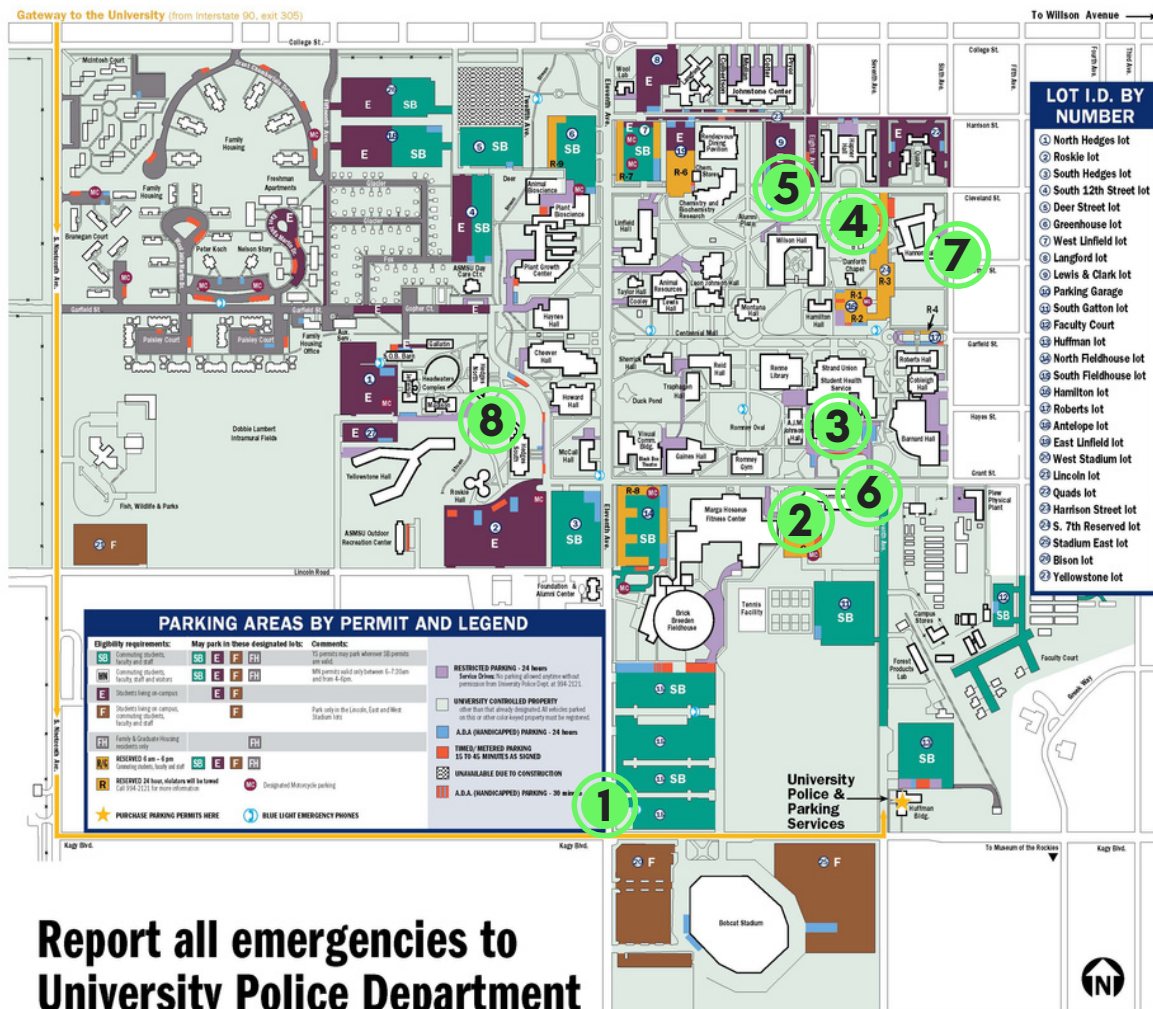
3 = Strand Union
Building (SUB)

COMPETITIVE EVENTS

4 = Herrick Hall
5 = Jabs Hall
6 = Norm Asbjornson
Hall
7 = Gallatin College
(Hannon Hall)

DINING

8 = Miller Dining Hall



**Report all emergencies to
University Police Department**

FCCLA SIGNAGE WILL BE LOCATED THROUGHOUT CAMPUS TO ASSIST STUDENTS IN EASILY FINDING THEIR BUILDINGS AND ROOMS.



BRING GOOD SHOES FOR WALKING AND INCLEMENT WEATHER.



The cost of parking on the MSU campus is included in the registration cost. MT FCCLA parking is located on the top floor of the Visitor Parking Garage. Please park all vehicles (except buses) in this area to avoid parking fines.

ARRIVAL

When arriving on Thursday and Friday, a map will be distributed (by March 1) with specific directions to ensure traffic flows as smoothly as possible. Parking attendants will be available and any bus not following the flow will be turned around. Please plan to arrive early and be patient as buses are unloaded.

DEPARTURE

When departing in the evenings, attendees will go to the parking lot where their bus or suburban is parked. Busses will not be permitted to pull up to the SUB to pick participants up.



Montana FCCLA Store

Pick up your Montana FCCLA favorites! Items shown are available on a pre-order basis. Advisers can place orders for members while registering for SLC. We will have your pre-paid orders sorted by chapter and ready for pickup with your registration packets when you arrive.



\$1

FCCLA pen with back ink, FCCLA logo sticky-notes (25 4x3" sheets) or conference logo magnet, (1.5x2.5") \$1 for each item; not a group



\$3

Pop wallet, 3.37" x 2.25" plastic and silicone with adhesive backing,, magnetic notepad (25 sheets, 6.25x2.37") or pen/highlighter duo, \$3 for each item; not a group



\$5



Lobster Shaped Polyurethane Stress Reliever \$5 each



\$11

8" beanie stuffed lobster, \$11 each.



\$8

Flat bill trucker hat with mesh back OR 12 ounce stoneware mug, \$8 for each item; not a group



\$10

100% polyester fleece headband in dark gray with red embroidered logo OR logo notebook (6x8), \$10 for each item; not a group



\$15

Sling bag, 12x16x4", Zippered closure, mesh bottle compartment, adjustable strap. \$15 each



\$19

12 ounce speckled campfire mug, \$19 each



\$19

Bella+Canvas poly cotton short sleeve crewneck t-shirt with screen print XS; S; M; L; XL; 2XL; 3XL; 4XL \$22 each



\$26

White cotton twill bucket hat with red embroidered logo, \$26 each

40 oz. Denali travel double wall, 18/8 stainless steel thermal mug, 9 3/4"H x 4"W. Copper vacuum insulation, stainless steel rim, dual-purpose push-on clear lid, matching sliding closure, flexible wide silicone straw and a powder coated finish. \$29 each

\$29



\$35

50/50 cotton/poly hoodie S; M; L; XL; 2XL; 3XL \$35 each

\$45

Dark gray poly/cotton fleece drawstring joggers, XS; S; M; L; XL; 2XL; 3XL; 4XL, \$45 each



- Orders will be accepted through February 10. Each item requires a minimum order per item; if minimums are not met, orders will be canceled and refunded.
- Proceeds from the Montana FCCLA Store will support Montana FCCLA Competitive Events Scholarships!

Montana FCCLA Store Order Tracker

Advisers: Please copy this form and distribute to chapter members. Collect this form and payment from your members before completing your State Conference Registration. **KEEP THIS FORM FOR YOUR RECORDS.** When all your members have had the opportunity to order, transfer your chapter's orders to your SLC registration form. Please collect payments from your members and submit when paying your SLC registration. Bring all your member forms to SLC for easy distribution of store orders!

Column 1		
Item	Individual Item Price	Total Price
Magnet	\$1	
Sticky Notes	\$1	
Stick Pen	\$1	
Notepad	\$3	
Highlighter Pen Combo	\$3	
Pop Wallet	\$3	
Stress Lobster	\$5	
Stoneware Mug	\$8	
Trucker Hat	\$8	
Logo Notebook	\$10	

Column 2		
Item	Individual Item Price	Total Price
Fleece Headband	\$10	
Lobster Beanie	\$11	
Sling Bag	\$15	
Speckled Mug	\$19	
T-Shirt What Size?	\$19	
Bucket Hat	\$26	
Travel Mug	\$29	
Hoodie What Size?	\$35	
Joggers What Size?	\$45	

Thank you for shopping at the Montana FCCLA Store! All available items will be included with your chapter's State Leadership Conference registration materials
All sales are final

Student Name:	
Column 1 total	
Column 2 total	
Total amount paid	

SPECIAL THANKS TO OUR CONFERENCE SPONSORS

GALLATIN
COLLEGE



MONTANA STATE UNIVERSITY



VISION ZERO
zero deaths · zero serious injuries

MONTANA DEPARTMENT
OF TRANSPORTATION



YSA

Youth Service America



**MONTANA
MEX**



**BlueCross BlueShield
of Montana**



**GREAT FALLS
COLLEGE**
MONTANA STATE
UNIVERSITY



Center for Research
on Rural Education



**MONTANA
STATE UNIVERSITY**

College of
**EDUCATION, HEALTH &
HUMAN DEVELOPMENT**