

78TH ANNUAL STATE LEADERSHIP CONFERENCE

dare
to
Dream

FCCLA
MONTANA

MARCH 20-21, 2025

MONTANA STATE UNIVERSITY

BOZEMAN, MT



THANK YOU TO OUR SPONSORS & PARTNERS

EVENT PLATINUM SPONSORS



STATE OUTREACH PROJECT SPONSORS



GOLD LEVEL PARTNERS



SILVER LEVEL SPONSORS



STAR EVENT SPONSORS



ANNUAL PARTNERS



2024 - 2025



State Executive Council

Hello FCCLA Members! Welcome to the 78th Annual State Leadership Conference. Your 2024-2025 State Executive Council has been working hard over the last year as we **Dare to Dream** together.

Montana FCCLA has traveled far and wide this year to help and participate in District Meetings, the State Outreach Project, and thousands of service hours, and we're not done yet! The leadership shown by this year's members has been amazing, and the State Officers are so proud of Montana FCCLA and its hard-working members!

Congratulations on making it to Bozeman for this powerful conference! We are challenging you to **Dare to Dream** during these few short days we're together. These memories will last a lifetime, so make sure to make the most of it! Best of luck in your competitions!

Sincerely,
Your 2024-2025 State Executive Council

- District 1** - Ava Krings, Conrad- VP of Community Outreach (Adviser: Stacy Aaberg)
- District 2** - Kiarra Michalson, Gallatin - First Vice President (Adviser: Bethany Ringer)
- District 3/9** - Maddy Johnston, Fergus - VP of Competitive Events (Adviser: Megan Vincent)
- District 4** - Frankie Struck, Billings Skyview - VP of Parliamentary Law (Adviser: Lindsay Hubbert)
- District 5** - Jodi Gibson, Garfield County - VP of Public Relations (Adviser: Barb Clark)
- District 6/7** - Natalie Seitzinger, Powell County - VP of Membership (Adviser: Kacie Perkins)
- District 8** - Triniti Anderson, Glasgow - VP of Programs (Adviser: Karleen Fossum)
- District 10** - Jill Baumgardner, Harlowton - State President (Adviser: Sandy Woldstad)
- District 11** - Aiden Kramer, Ennis - VP of Finance (Adviser: Jamie Diehl)

CAMPUS MAP



IN THE BACK!

SCHEDULE OF EVENTS



THURSDAY, MARCH 20

8:00-4:00 **FCCLA CULINARY EVENTS**
Hannon Hall - Gallatin College

11:30-1:30 **CHAPTER REGISTRATION**

SUB Foyer - Ballroom A

11:30-3:00 **CONFERENCE EXPO/COLLEGE AND CAREER READINESS FAIR**

Leigh Lounge

See pages 3-6 for more information.

1:00-2:00 **COMPETITIVE EVENT MATERIAL DROP-OFF & CHECK IN**

Event Buildings (Romney 206, Herrick 221 and Jabs 202)

- Locate competitive event rooms.
- One "Event Material" room per competition building will be available to drop off materials.
- At-your-own risk; an adult will be available to monitor but not formally check materials in and out.
- Room will be locked after 4:30.

11:30-1:30 **INCOMING SEC OFFICER REHEARSAL & INTERVIEWS**

SUB A, SUB 230

1:00-1:45 **CONSULTANT ORIENTATIONS**

- 1:00-1:45: Event Assistant (SUB BALLROOM C)
- 1:00-1:45: Capture Crew (SUB 236)
- Skill Demo Event Evaluator Orientation will be with event orientation on Friday.

1:00-1:45 & 2:00-2:45 **DARING DREAMER WORKSHOPS**

Numerous Options for ALL attendees (see page 8)

- Includes Chapter & District Officer Training and State Outreach Project Training. Check pages 8-9 of the program for all options.

1:15-2:00 **LEAD & ASSISTANT LEAD ORIENTATIONS**

SUB 233

Event Lead & Assistant Lead Meeting (All event leads & assistants). During this time we will review event policies and you will receive event facilitation notebooks and supplies.

1:00-2:45 **MONTANA MAYHEM**

SUB Alumni Lounge

Are you up for the Montana Mayhem challenge? Visit your State Executive Council for engaging opportunities, earning a stamp at each station to win big prizes while you network with others. Montana Mayhem Part 2 happens on Friday afternoon.

3:00-5:00 **OPENING GENERAL SESSION: KEYNOTE**

SUB Ballrooms

Keynote: Jordan H. Davis

5:00-6:30 **ADVISER ACTIVITIES**

SUB 235/233

- 5:00-5:45 - **Adviser Recognition Dinner** (advisers only)
- 5:45-6:30 - **Chapter Adviser Gathering** (ALL advisers). During this time you will receive the competition schedule for your students.

5:00-6:30 **ATTENDEE DINNER**

Miller Dining Hall

- Dinner for all attendees and chaperones
- Ticket provided in registration packet and required for entrance.
- Download the Goosechase app, complete some missions, and win incredible prizes!

6:45-8:15 **SECOND GENERAL SESSION: RECOGNITION**

SUB Ballrooms

General session for all attendees to recognize our amazing leaders, advisers and chapters
See pages 12-14

8:30-9:00 **DISTRICT MEETINGS**

SUB & Herrick Hall (see page 13)

Meet as a district to have fun & conduct district business meetings.

GALLATIN
COLLEGE
MONTANA STATE UNIVERSITY

**Competitive Events
Participants: Check
in to your building
and confirm your
event!**



Don't miss Chef Eduardo's workshop in the Procrastinator Theater on Thursday!



1. Download the **Goosechase App**
2. **Participate in challenges**
3. **Win prizes!**

CONFERENCE EXPO AND COLLEGE & CAREER READINESS FAIR

THURSDAY, MARCH 20 - LEIGH LOUNGE & PROCRASTINATOR LOUNGE

11:30-3:00

GALLATIN COLLEGE MSU



Gallatin College MSU, in Bozeman, Montana, offers programs that accelerate your time to graduation and the start of a successful career. Our general education programs offer a supportive and affordable transition into college while workforce programs provide you with valuable skills necessary for jobs in thriving industries such as business, construction trades, culinary arts, healthcare, interior design and more. Along with small class sizes, expert instruction, and extensive student resources, we help you discover your unique talents and passions on your journey to fulfilling your potential!

MONTANA DIGITAL ACADEMY



Montana Digital Academy, created in 2009 by the Montana Legislature, is Montana's state online program comprised of three departments: Distance Learning, EdReady, and Digital Learning Clearinghouse. The three departments provide robust and innovative solutions for students in partnership with public schools across the state. With extensive and ever-expanding offerings for students, MTDA puts no limits on learning. Find out more at montanadigitalacademy.org.

ZERO TO FIVE MONTANA



Zero to Five Montana is a statewide early childhood organization focused on increasing access to early care and education, supporting and strengthening families, uplifting voices, and empowering small businesses and communities. We are nonpartisan and focused on solutions that work toward a Montana dedicated to every child. Our Montana Child Care Business Connect program is the statewide hub for child care business development and innovation, and supports the start, stability, viability, and expansion of high-quality child care businesses in Montana.

ACTIVE LEARNING LABS



Active Learning Labs is a provider of interactive web-based educational materials helping students master concepts in personal finance, accounting, marketing, entrepreneurship, Career and Technical Education (CTE), and STEM. Our interactive activities increase student engagement and improve mastery and retention of the key concepts.

DEPARTMENT OF LABOR JOB SERVICES AND CAREER LAB



Montana Career Lab is more than a resource to aid in career planning. The website features a collection of resources including publications, videos, activities, and online information to help make informed decisions about your future. This includes the Montana Career Information System (MCIS), an all-in-one career planning system that lets users search for and save detailed information on occupations, programs of study, scholarships, and self-assessments. Our publications walk users through each step of career planning, from exploring self-interest, work values, skills, to preparing for a job interview.

CONFERENCE EXPO AND COLLEGE & CAREER READINESS FAIR

THURSDAY, MARCH 20 - LEIGH LOUNGE & PROCRASTINATOR LOUNGE

11:30-3:00

MSU COLLEGE OF EDUCATION, HEALTH AND HUMAN DEVELOPMENT



In the MSU College of Education, Health and Human Development, we learn by doing to transform lives and communities. The college offers a wide variety of programs in health care, preventative health fields, and teaching. Students graduating from the College Education, Health and Human Development go on to become medical doctors, physical therapists, counselors, teachers, dietitians, agriculture advocates, food product developers, hotel and restaurant managers, and much more.

GREAT FALLS COLLEGE MSU



Great Falls College MSU is a 2-year college located in Great Falls, MT, offering associates degrees, certificate programs, and non-credit career training options for students of all ages. Our 8-week advantage gives students the flexibility to complete classes in just eight weeks, making it easier to juggle school, family, and work obligations. Students can earn a degree in a wide variety of areas--welding, nursing, computer science, and dental hygiene to name a few--or pursue an associate of arts or science degree with the plan of transferring to a four-year school to obtain a bachelor's degree. We also offer Dual Enrollment opportunities for high school students wanting to get a head start on their college courses.

MILES COMMUNITY COLLEGE



Miles Community College (MCC) prepares students for success and provides opportunities for lifelong learning through quality programs, community outreach, and partnerships. MCC offers over 40 degrees and programs in a variety of timelines, with both on-campus and online options to fit your needs. Traditional transfer degrees (two years), workforce-ready programs (one- and two years), and short-term training (six weeks to a year) are available in a myriad of subjects in professional and in-demand fields. MCC offers a wide range of programs including nursing and healthcare, agriculture and equine, business, information technology, education, and more!

MSU NORTHERN



MSU-Northern is Montana's premier university for hands-on, career-focused education. Located in Havre, Montana, we offer affordable, high-quality programs ranging from certificates to master's degrees in programs such as trades, education, healthcare, engineering, business, agriculture, and the sciences. Our small class sizes, personalized instruction, and real-world learning experiences provide students with the skills and knowledge they need for successful careers in high-demand fields.

MONTANA WESTERN



Montana Western is the only public university in the nation that operates on a block schedule that we call Experience One. Experience One is all about hands-on learning – it's what makes Montana Western unique. Instead of juggling multiple classes at once, you focus on just one course at a time. For 18 days, you dive deep into that subject for three hours a day. After that, you move on to the next course. By the end of the semester, you'll complete four courses and earn the same credits as a traditional schedule – without the stress of multitasking!

CONFERENCE EXPO AND COLLEGE & CAREER READINESS FAIR

THURSDAY, MARCH 20 - LEIGH LOUNGE & PROCRASTINATOR LOUNGE

11:30-3:00

UNIVERSITY OF PROVIDENCE



As an expression of the teaching mission of Jesus Christ, the mission of the University of Providence is to provide students with the opportunity to obtain a liberal education for living and for making a living. While grounded in the teachings of the Catholic Intellectual Tradition, all are welcome to become a part of the University of Providence family and its bright future.

REACH HIGHER MONTANA



Reach Higher Montana helps Montana students make plans for life after high school, including worked-based learning, college, or the workforce and many options in between. Reach Higher Montana provides information on scholarships, financial aid, career exploration, college and job searches. Reach Higher Montana has tools and resources to help students prepare for life after high school.

MORRIS BROWN COLLEGE



Founded in 1881, Morris Brown College is a proud HBCU with a legacy of excellence. Our Hospitality Management Certificate Program, supported by The Arthur M. Blank Family Foundation, offers hands-on training inside an operational hotel.

JOB CORPS



Anaconda & Trapper Creek Job Corps Centers are known as Civilian Conservation Centers. These centers are operated by the U.S. Forest Service and encourage students to learn in nature and work to sustain and improve the land they live on. By embracing their natural surroundings, students at these centers are able to train in additional career fields, including wildland firefighting, forestry conservation, welding, mechanics, electrical, culinary arts and carpentry. Eligible students 16-24 years old can earn their high school education, trade and driver's license completely free. This also includes housing, meals, trade clothing, etc.

LOCAL ENERGY DEALER FUNDRAISING



Local Energy Dealers sell non-alcoholic, sugar free, healthy energy drinks known also as "LIT Teas" or "Loaded Teas" popularly served in Nutrition Clubs around the country. Our Fundraising Division sells DIY Tea Kits (like pizza or candy bar fundraisers) for customers to make on-the-go anytime, anywhere. Organizers love the fun, simple format that gives back 50% of proceeds to cover event or conference travel and registration expenses, equipment and uniforms which offsets a families financial burden. Our "White Glove Delivery" ensures all orders arrive sorted, ready to go, plus we offer direct ship for out of area family and friends.

DEPARTMENT OF EDUCATION MONTANA STATE UNIVERSITY



MSU's Department of Education offers both undergraduate and graduate degrees for people interested in becoming educators, school leaders or higher education faculty. If you are a high school student interested in becoming a teacher, swing by our booth to find out more about our Future Rural Educators' Club and Camp.

CONFERENCE EXPO AND COLLEGE & CAREER READINESS FAIR

THURSDAY, MARCH 20 - LEIGH LOUNGE & PROCRASTINATOR LOUNGE

11:30-3:00

ZWILLING, J.A.
HENCKELS



Zwilling JA Henckels has been making premium German cutlery since 1731. We are proud to partner with FCCLA to provide quality tools to culinary education students nationwide.

HAVEN

haven

Can you spot the signs of a healthy relationship? How about an unhealthy one? Visit with Haven representatives to learn more about healthy relationships, and also learn more about careers in the helping professions and volunteering or outreach project opportunities.

ASH INTERACTIVE



How does your online presence impact your opportunities, bot now and in the future? Visit with Pete Brown, Founder and CEO of Ash Interactive to learn more about practical marketing strategies teenagers can use now to prepare for future success, as well as how to improve your own self-promotion!

This exhibit is sponsored by CoolWorks. Visit them at coolworks.com to learn more

SAY YES TO
FCS



Have you ever considered a career in FCS? What about a career in an FCS related field? Do you even know what an FCS related field is? Stop by and learn about all the possibilities FCS can offer your future self.

BEQUET CONFECTIONS



If you have ever tried a Bequet creation, you know they are incredible. These gourmet caramels handmade in Bozeman, MT with a buttery, one-of-a-kind experience you'll never forget are aslo a fundraising partner with Montana FCCLA. Stop by to visit with Sally to learn how she can help your chapter with all their fundraising needs.

MONTANA TECHNOLOGICAL
UNIVERSITY/HIGHLANDS
COLLEGE **MONTANA**
TECHNOLOGICAL UNIVERSITY

Montana Technological University offers a world-class education in science, technology, engineering, mathematical sciences, and healthcare disciplines while the university's Highlands College is home to career-ready trades, technology, and transfer programs that develop the workforce needed to better lives in our community, state, and beyond.

UNIVERSITY OF
MONTANA



The University of Montana transforms lives by providing a high-quality and accessible education and by generating world-class research and creative scholarship in an exceptional place. We integrate the liberal arts and sciences into undergraduate, graduate and professional studies to shape global citizens who are creative and agile learners committed to expanding the boundaries of knowledge and to building and sustaining diverse communities.

SAVE THE
DATE!



2025 FALL LEADERSHIP RALLY
BILLINGS
SEPTEMBER 28-29, 2025!





BY CONNECTING, LEARNING & HAVING FUN!

PARTICIPATION OPTIONS...

AS A TEAM

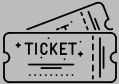


1. **Download the Goosechase App**
2. **Use this code to join the game:**
3. **Create an account**
4. **Each chapter will have their own team**
5. **Check the App frequently for new missions**
6. **Earn points for each mission for a chance to win gift cards for a chapter celebration!**

INDIVIDUALLY



TICKETS



1. Attend the Daring Dreamer workshops and College & Career Readiness Fair.
2. Tickets will be randomly distributed for leadership, professionalism and engagement.
3. Write your name and school on your ticket.
4. Drop your tickets in the bag outside SUB A before each general session to be entered into the drawing.

BONUS DRAWING FOR FRIDAY AFTERNOON ATTENDANCE!

SPIRIT BEADS

1. Each participant receives one strand of beads
2. During meals and breaks, challenge other attendees to a game of rock, paper, scissors
3. The winner takes the beads from his/her opponent
4. The attendee with the most beads at closing session wins a gift card!

PRIZES DRAWN AND AWARDED DURING GENERAL SESSIONS

DARING DREAMER WORKSHOPS

THURSDAY, MARCH 20 1:00 PM (PICK ONE)

DISTRICT AND CHAPTER OFFICER TRAINING

ROMNEY 316

Brooklyn Gross, National FCCLA Leadership Team

Ready to amplify your leadership skills? Explore the four key roles that define great leaders, and master the art of becoming a role model, decision-maker, visionary, and communicator. Get ready to uncover game-changing habits that will kickstart your officer journey!

GET ON A ROLL!

ROMNEY 211

Jodi Heard and Andy Begger, Reach Higher Montana

Reach Higher Montana helps Montana students make plans for life after high school, including work-based learning, college, or the workforce. We offer information, tools, and resources to help students plan their future and prepare for a happy life and successful career.

COOKING AS A RECIPE FOR LIFE

SUB PROCRASTINATOR THEATER

Chef Eduardo Garcia

As a chef, I am often asked, "What is your favorite dish to cook or to eat?" To this I reply, a dish with a story to tell and using ingredients I have a relationship with. Over my career as a chef and in my relationship at large with soil, water, and nutrient rich and culturally vibrant and healthy foods, I've come to a couple conclusions. Please join!

OIL AND VINEGAR 101 - A TASTING EXPERIENCE

SUB FIREPLACE ROOM

Nicole Lemon and Susie Francis, Olivelle

Taste and explore the world of olive oil and balsamic vinegar with Olivelle! This interactive workshop will give you a better understanding of the art of making olive oil and balsamic through a guided tasting experience, led by the Olivelle experts!

FAMILIES FIRST STATE OUTREACH PROJECT TRAINING

HERRICK 117

Madalyn Fox

The 2025-26 Montana FCCLA State Outreach Project is Career Connection, and the **pre-registered** attendees at this session will explore the components of the Career Connection program and how it can be used to help members develop habits now that will help them excel in their future careers.



CHOOSING A CAREER IN EARLY CHILDHOOD EDUCATION

HERRICK 307

Kendra Edlin, Zero to Five Montana

This session will help participants understand the critical importance of Early Childhood Education in the State of Montana. They will learn about Careers in the profession, and create a Child care lesson plan.

MONTANA MAYHEM

ALUMNI LOUNGE

2024-2025 State Executive Council

Are you up for the Montana Mayhem challenge? Visit your State Executive Council for engaging opportunities, earning a stamp at each station to win big prizes while you network with others.

DREAM, EXPLORE, ACHIEVE: YOUR PATH IN COMMUNITY HEALTH

ROMNEY 315

Zach Akin, Kierra Parrish, and Gretchen Schnabel, MSU Students

Curious about becoming Community student at MSU? Explore fun stations to learn more about the classes you'll take, and the career opportunities available in the health professions.

DARING DREAMER WORKSHOPS

THURSDAY, MARCH 20 2:00 PM (PICK ONE)

DISTRICT AND CHAPTER OFFICER TRAINING

ROMNEY 316

Brooklyn Gross, National FCCLA Leadership Team

Ready to amplify your leadership skills? Explore the four key roles that define great leaders, and master the art of becoming a role model, decision-maker, visionary, and communicator. Get ready to uncover game-changing habits that will kickstart your officer journey!

CAREER CONNECTION RESOURCES FOR YOUR 2025 STATE OUTREACH

ROMNEY 211

Mary Ellen Earnhardt, Department of Labor Career Lab

Obtain resources that will assist you in learning about your personal interests, skills and goals to careers. You will obtain material that will help you gain a better understanding of the world of work how to set and reach career goals. These resources will aid you with the FCCLA State Outreach Project Career Connection

COOKING AS A RECIPE FOR LIFE

SUB PROCRASTINATOR THEATER

Chef Eduardo Garcia

As a chef, I am often asked, "What is your favorite dish to cook or to eat?" To this I reply, a dish with a story to tell and using ingredients I have a relationship with. Over my career as a chef and in my relationship at large with soil, water, and nutrient rich and culturally vibrant and healthy foods, I've come to a couple conclusions. Please join me in an open minded adventure through my Hungry Life

OIL AND VINEGAR 101 - A TASTING EXPERIENCE

SUB FIREPLACE ROOM

Nicole Lemon and Susie Francis, Olivelle

Taste and explore the world of olive oil and balsamic vinegar with Olivelle! This interactive workshop will give you a better understanding of the art of making olive oil and balsamic through a guided tasting experience, led by the Olivelle experts!

FAMILIES FIRST STATE OUTREACH PROJECT TRAINING

HERRICK 117

Madalyn Fox

The 2025-26 Montana FCCLA State Outreach Project is Career Connection, and the **pre-registered** attendees at this session will explore the components of the Career Connection program and how it can be used to help members develop habits now that will help them excel in their future careers.



BETTER UNDERSTANDING OF MONEY USING INTERACTIVE ACTIVITIES

HERRICK 307

Melissa Knoles Director, Customer Engagement

There is a growing recognition that a solid understanding of money is critical to students' future success. This workshop will show how interactive financial activities improve student understanding and retention of key concepts including career path decisions, saving, borrowing, insurance, taxes and investing.

MONTANA MAYHEM

SUB ALUMNI LOUNGE

2024-2025 State Executive Council

Are you up for the Montana Mayhem challenge? Visit your State Executive Council for engaging opportunities, earning a stamp at each station to win big prizes while you network with others.

THE EXPERIENCE MAKERS: HOSPITALITY IN ACTION

ROMNEY 315

Meredith Allen Hospitality Program Manager

Ever wondered what it takes to plan an epic event or create unforgettable guest experiences? Join Gallatin College for a hands-on workshop where you'll dive into the world of hospitality! Acting as a hospitality pro you get to design an event and solve real-world challenges. By the end, you'll walk away with awesome skills, new friends, and a fresh look at the many exciting career paths in hospitality. If you love teamwork, creativity, and fast-paced fun this workshop is for you!

DARE TO DREAM BIG! NATIONAL LEVEL PARTNERSHIP OPPORTUNITIES AND NLC NAVIGATION

SUB 233

Heather Quenzer and Deanna Patton, Chapter Adviser Summit Scholarship Recipients

Visit this session to learn about the many partnership opportunities for chapters, as well as the pro-tips for navigating Orlando for the National Leadership Conference.

COLLEGE OF EDUCATION, HEALTH AND HUMAN DEVELOPMENT CAMPUS TOUR

SUB FOYER/COFFEE SHOP

Kayte Kaminski, Senior Assistant Dean/Director of Student Success, College of Education, Health & Human Development

What's it really like to be on a college campus every day? What programs are available? What organizations could you join? To find out the answers to these questions and so much more, attend our campus tour and see what it's really like on our college campus! Attendees should be prepared for some walking and bring their questions about college!

OPENING GENERAL SESSION

THURSDAY, MARCH 20 @ 3:00 PM
SUB BALLROOMS A, B, C & D

CHAPTER SERVICE
SHOWCASE

MEET THE STATE
OFFICERS



MONTANA
STATE UNIVERSITY
College of
EDUCATION, HEALTH &
HUMAN DEVELOPMENT

FLAG CEREMONY

SPECIAL WELCOME BY
MSU HDD



JORDAN H. DAVIS

One of the biggest stressors students face is the uncertainty around their future professional careers.

Jordan introduces students to design thinking, a methodology that students can use to ease career-related stress and carve a career pathway that's conducive to personal and professional well-being. Jordan shares how he's used design thinking to reach his personal, academic and career goals, and how these lessons and practices can support students in overcoming imposter syndrome, maintaining work-life-school balance, and navigating personal relationships in pursuit of their ideal careers. Students come away thinking about the social challenges they want to solve, the skills they'll need to solve them, and fulfilling opportunities to put those skills to work.

SECOND GENERAL SESSION: 6:45PM

MEMBER & CHAPTER RECOGNITION; THURSDAY EVENT AWARDS
SUB BALLROOMS A, B, C & D

DISTRICT MEETINGS 8:30-9:00

District 1: Romney 315

District 2: SUB Alumni Lounge

District 3/9: SUB 235

District 4: Procrastinator Theater

District 5: Romney 211

District 6/7: Romney 7

District 8: SUB 233

District 10: Romney 8

District 11: SUB Fireplace Room

CREED

We are the Family, Career and Community Leaders of America. We face the future with warm courage and high hope. For we have the clear consciousness of seeking old and precious values.

For we are the builders of homes, homes for America's future, homes where living will be the expression of everything that is good and fair, homes where truth and love and security and faith will be realities, not dreams. We are the Family, Career and Community Leaders of America. We face the future with warm courage and high hope.



CEREMONIES



OPENING CEREMONY

President: (Give rap with gavel signaling officers and members to stand) "We are members of Family, Career and Community Leaders of America. Our mission is to promote personal growth and development through Family and Consumer Sciences Education."

Officers: "Focusing on the multiple roles of family member, wage earner, and community leader, members develop skills for life through character development, creative and critical thinking, interpersonal communication, practical knowledge and career preparation."

Members: "As we work toward the accomplishment of our goals, we learn cooperation, take responsibility, develop leadership and give service."

President: "This meeting of the Montana Association of Family, Career, and Community Leaders of America is now in session. You may be seated."

CLOSING CEREMONY

President: (Give rap with gavel signaling officer and members to stand) "FCCLA members, we are challenged to accept the responsibility of making decisions that affect our lives today and the world tomorrow. Let us repeat our creed."

Members: "We are the Family, Career and Community Leaders of America. We face the future with warm courage and high hope. For we have the clear consciousness of seeking old and precious values. For we are the builders of homes, homes for America's future, homes where living will be the expression of everything that is good and fair, homes where truth and love and security and faith will be realities, not dreams. We are the Family, Career and Community Leaders of America. We face the future with warm courage and high hope."

President: "This meeting of the Montana Association of Family, Career, and Community Leaders of America is now in adjourned." (rap gavel once)

SCHEDULE OF EVENTS



FRIDAY, MARCH 21

6:30-7:15 BREAKFAST AT HOTELS

7:15-7:45 TRAVEL TO CAMPUS

- Busses must park in the South Fieldhouse lot.
- Cars will park in the top floor of the Parking Garage.

8:00-8:30 EVENT LEAD & ASSISTANT COMPETITION SET-UP

Individual Competition Rooms (see page 16)

- Set up competition rooms and post schedules outside doors.

8:00-2:00 COMPETITIVE EVENT MATERIAL STORAGE

Jabs 202, Herrick 221, Romney 206

- One "Event Material" room per competition building will be available to store materials.
- At-your-own risk; an adult will be available to monitor but not formally check materials in and out.
- Rooms will close at 2:00; event materials should be returned to bus. Limited storage will also be available in the SUB.

8:30-9:00 EVALUATOR ORIENTATION

Individual Competition Rooms (see page 16)

- Event leads conduct orientation with evaluators.

8:30-9:15 DARING DREAMER WORKSHOPS

9:30-10:15 Rooms in the SUB: See details on pages 13-15

10:30-11:15

11:30-12:15

9:00-2:00 STAR & SKILL DEMONSTRATION EVENT COMPETITION

Individual Competition Rooms (see page 16)

- Competitors receive competition times from their advisers.

9:00-4:30 INCOMING OFFICER TRAINING

SUB 168

- Required for all Incoming Officers; they do not compete in a competitive event.
- Installation practice begins at 3:00pm.

9:30-11:30 LEADERSHIP SEMINAR: HUMOR AND COMMUNICATION

SUB B

- Led by Keynote Speaker: Jordan H. Davis
- **Pre-registration required.**

11:45-2:00 LUNCH



Miller Dining Hall

- Lunch for all attendees, event evaluators, adviser and chaperones in the dining hall.
- May eat anytime between 11:45-2:00.
- Ticket provided in registration and required for entrance.



Goosechase challenges released throughout the day!



Attend workshops for the chance to earn tickets for the prize drawings!

JORDAN H. DAVIS



DARING DREAMER WORKSHOPS

FRIDAY, MARCH 21 - ALL WORKSHOPS ARE IN THE SUB

8:30 - 9:15

SPOTLIGHT ON SERVICE

SUB 235

BROOKLYNN GROSS, FCCLA LEADERSHIP TRAINING TEAM

Discover the power of community service and learn how your chapter can create successful volunteer projects. By the end of the workshop, you'll be ready to implement a service project and make a difference in your school or community.



CAREER INTEREST WORKSHOP

SUB C

CRISSINA HAYES ASSOCIATE DIRECTOR, CAREER SERVICES

TRACY NOVAK CAREER EDUCATION COACH

Students will get to spend some time reflecting on their interests, values, and skills and use that to explore majors and careers in alignment in those interest areas, learn how to use exploration tools, and research career paths.

9:30 - 10:15

HEALING HARMONIES

SUB C

KAYLEE WOLFENBERGER, MISS MONTANA

Join Miss Montana, Kaylee Wolfensberger, for an insightful workshop exploring the prevalence of childhood trauma and its profound impact. Learn about the different types of trauma, how adverse conditions exacerbate these experiences, and how music can serve as a powerful coping mechanism. Participants will gain understanding, find support, and discover the potential of Healing Harmonies, a service initiative that Kaylee has created. This engaging session fosters awareness and empowerment.

RELATIONSHIPS 101

SUB D

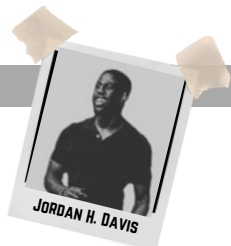
MADI HERMAN TRAINING DEVELOPMENT COORDINATOR

This interactive workshop will break down common myths and misconceptions about relationships and highlight the differences between healthy, unhealthy, and abusive relationships. Participants will walk away with a better idea of what red flags in any type of relationship look like as well as skills for creating healthy relationships for a lifetime!



DARING DREAMER WORKSHOPS

FRIDAY, MARCH 21 - ALL WORKSHOPS ARE IN THE SUB



LEADERSHIP SEMINAR

9:30 - 11:15, SUB B

*Pre-registration required.

ELIMINATE CAREER FEAR: DESIGN YOUR LIFE AFTER GRADUATION

Students turn into design thinkers and apply the principles of Jordan's signature keynote in a collaborative, hands-on workshop session. They'll have a chance to reflect on their academic and professional journey, set career goals, and identify opportunities to prototype/"try out" their careers through high-impact practices, and develop strategies for applying leadership skills cultivated through FCCLA membership into workplace situations.

10:30-11:15

GETTING GRITTY WITH IT: LESSONS FROM FAILURE

SUB C



TRACEY ROBECKER, MSU EXTENSION COLLEGE AND CAREER SPECIALIST

Discover how failure is a stepping stone to success in this interactive, hands-on workshop. Through group and one-on-one activities, participants will delve into famous failures throughout history and reflect on their own experiences with adversity. Learn to reframe setbacks as opportunities for growth and gain practical strategies to build resilience and grit. Perfect for anyone ready to embrace failure as a powerful teacher on the road to success.

COLLEGE LINGO BINGO

SUB D



SHERRY LYNN DOW, ADMISSIONS & COMMUNICATIONS SPECIALIST

This interactive workshop will break down common myths and misconceptions about relationships and highlight the differences between healthy, unhealthy, and abusive relationships. Participants will walk away with a better idea of what red flags in any type of relationship look like as well as skills for creating healthy relationships for a lifetime!

THINK SMART, SAVE SMART: BE A MONEY MASTER!

SUB 233



SHELBY DANGERFIELD, MISS MONTANA USA

Join us for "Think Smart, Save Smart: Be a Money Master!" In this engaging session, students will learn essential money management skills, including budgeting, saving, and distinguishing wants from needs. Through interactive questions and real-life scenarios, participants will gain the confidence to make informed financial decisions. The workshop will also emphasize the role of discipline in achieving financial success, equipping students with the tools they need for a bright financial future.

DREAM BIG WITH HDFS: EXPLORE YOUR FUTURE

SUB 235



TRINITY ATTERSON, KAYLA YOUNG, AND JENNA SHAW, MSU STUDENTS

Curious about becoming Human Development and Family Sciences student at MSU? Explore fun stations to learn more about the classes you'll take and the multiple career opportunities, including FCS teacher, childcare teaching, mental health professional, and many more!

HACK YOUR ONLINE CLASSROOM: TIPS & TRICKS THAT WORK

SUB FIREPLACE ROOM



LISA BECHTOLD, MTDA CLEARINGHOUSE PROGRAM DIRECTOR

Tired of feeling stuck or overwhelmed with online classes? Join MTDA for this hands-on workshop where students will learn about tech tools and study hacks that make online learning more manageable. We'll show you how to stay organized, focused, and motivated regardless of location. Plus, get the real scoop on using AI tools like ChatGPT the right way - no cheating required! Bring your laptop or phone to be able to fully enjoy this workshop!



DARING DREAMER WORKSHOPS

FRIDAY, MARCH 21 - ALL WORKSHOPS ARE IN THE SUB

11:30-12:15

HOW COMMUNITY OUTREACH IS LIKE MAKING FRIENDS

SUB FIREPLACE ROOM

★ ★ ★
TEAL WHITAKER IMAGINATION LIBRARY OUTREACH COORDINATOR,
★ ★ ★
BEN FRENTSOS DIRECTOR OF COMMUNITY IMPACT

Making friends involves getting to know each other, spending time together, and finding common ground. The same applies to community outreach. In this interactive session, learn more about the positive impact of effective community outreach and team up to develop an outreach plan of your own to address an important community issue.

WIN THE "GAME OF LIFE": SAY YES TO A FCS CAREER!

SUB D

★ ★ ★
★ ★ ★
★ ★ ★
GAYLA RANDEL

Do you know about careers related to the "Game of Life"? Attend this session to learn the "rules" of picking a great career, especially those which align to making a real difference in your life and the life of others.

FAMILIES FIRST, STATE OUTREACH PROJECT (PRE-REGISTRATION REQUIRED)

SUB 235

★ ★ ★
★ ★ ★
★ ★ ★
MADALYN FOX

This session will build on earlier training to develop skills to integrate the national program Career Connection into your own community. Attendees will develop and share plans for local outreach projects to be implemented in the 2025-26 school year. **Pre-registration is required.**



DISTRICT & CHAPTER OFFICER TRAINING (PRE-REGISTRATION REQUIRED)

ALUMNI LOUNGE

★ ★ ★
★ ★ ★
★ ★ ★
BROOKLYN GROSS

How can officers help everyone get involved in the Ultimate Leadership Experience? Discover strategies for engaging members at the chapter or district level. Learn how to spark enthusiasm, build teamwork, and help your district or chapter soar to new heights!

HEALTHY RELATIONSHIPS

SUB 233

haven

★ ★ ★
★ ★ ★
★ ★ ★
MEILYN ORDAZ REVETE, PREVENTION COORDINATOR, HAVEN

Gain a better understanding of what the signs of an unhealthy relationship and a healthy relationship look like.



COMPETITIVE EVENTS



THURSDAY, MARCH 20: 8:00-4:00

PROSTART & FCCLA CULINARY STAR & SKILL DEMONSTRATION EVENTS



- ProStart Culinary**
- ProStart Management**
- FCCLA: Baking & Pastry**
- FCCLA: Culinary Arts**
- FCCLA: Culinary Food Art**
- FCCLA: Culinary Knife Skills**
- FCCLA: Pastry Arts Technical Decorating Skills**

All events held in Hannon Hall @ Gallatin College

FRIDAY, MARCH 21: 8:30-2:00



SKILL DEMONSTRATION EVENTS



- Knowledge Challenge** - Herrick 307 & 308
- FCCLA Creed Speaking** - Herrick 307 & 308
- Fashion Sketch** - Herrick 307 & 308
- Interior Design Sketch** - Herrick 307 & 308
- mpromptu Speaking** - Herrick 307 & 308

- Interviewing Skills** - Herrick 307 & 308
- Lesson Plan Development** - Herrick 307 & 308
- Speak Out for FCCLA** - Herrick 307 & 308
- Toys that Teach** - Herrick 307 & 308
- Technology in Teaching** - Herrick 307 & 308

STAR EVENTS

- Career Investigation** - Jabs 405
- Chapter in Review Display** - Herrick 117
- Chapter in Review Portfolio** - Herrick 117
- Chapter Service Project Display** - Herrick 117
- Chapter Service Project Portfolio** - Herrick 117
- Early Childhood Education** - Jabs 415
- Entrepreneurship** - Jabs 111
- Event Management** - Romney 235
- Fashion Construction** - Jabs 311
- Fashion Design** - Jabs 311
- Focus on Children** - Jabs 415
- Food Innovations** - Jabs 315
- Hospitality, Tourism and Recreation** - Herrick 314
- Interior Design** - Herrick 314
- Interpersonal Communications** - Jabs 407

- Job Interview** - Jabs 103
- Leadership** - Romney 408
- National Programs in Action** - Romney 236
- Nutrition and Wellness** - Herrick 313
- Parliamentary Procedure** - Jabs 305
- Personal Finance** - Romney 408
- Professional Presentation** - Jabs 407
- Promote and Publicize FCCLA** - Jabs 307
- Public Policy Advocate** - Jabs 111
- Repurpose and Redesign** - Romney 211
- Say Yes to FCS Education** - Jabs 307
- Sports Nutrition** - Herrick 313
- Sustainability Challenge** - Romney 408
- Teach and Train** - Jabs 111

Competitive Event Headquarters: SUB 236

SCHEDULE OF EVENTS

FRIDAY, MARCH 21

12:15-3:30 INDUSTRY IMMERSION TOUR

Front Entrance of SUB; Pre-registration required

12:15-3:30 SERVICE ROAD TRIP

See your chapter adviser; pre-registration required

1:00-2:45 FCCLA 101 LEADERSHIP WORKSHOP

Jabs 315

- Led by LTT Brooklyn Gross. **Pre-registration required**

1:00-1:45 DARING DREAMER WORKSHOPS

2:00-2:45 Various Rooms in the SUB (see pages 18-20)

- Engaging, hands-on workshops about all areas of preparation for life! - open to anyone!
- See details on pages 18-20

3:00-4:45 ULTIMATE ENGAGEMENT OPTIONS

the sessions below are self directed--come and go as you please, with the exception of the Rec Center---schedule follows on the next page.

THE CONNECTION ROOM

SUB Fireplace Room (see page 20)

- Push pause for a moment and connect with others in a quiet environment. Complete some coloring pages, reflect on SLC, and make a friendship bracelet.

MONTANA MAYHEM: PART 2

SUB 233/235 (see page 20)

- Visit your State Executive Council for engaging opportunities, earning a stamp at each station to win big prizes while you network with others.

THE SERVICE ROOM

SUB Alumni Lounge (see page 20)

- Participate in service activities to enhance your well-being while making a difference for others. Create custom inspirational artwork for Haven clients re-establishing independence. Service projects sponsored by **Youth Service America**.

4:45-6:00 DINNER



Miller Dining Hall

- Dinner for all attendees; may eat anytime between 4:45-6:00
- Ticket provided in registration and required for entrance.

6:15-8:15 CLOSING GENERAL SESSION

SUB Ballrooms A/B/C/D

- Montana FCCLA Annual Business Meeting
- Outreach Recognition
- Incoming Officer Installation
- Skill Demonstration, and STAR Event Competition Awards
- 8:15: Advisers only: pick up Competitive event results and medals



Attend workshops & the CCR Fair for the chance to earn tickets for the prize drawings!

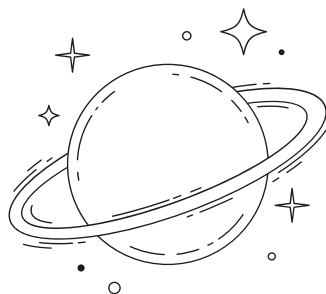
BONUS DRAWING FOR FRIDAY AFTERNOON SESSIONS!



Goosechase challenges released throughout the day!

haven

YSA Youth Changing the World
YOUTH SERVICE AMERICA



DARING DREAMER WORKSHOPS

FRIDAY, MARCH 21

1:00-1:45

FROZEN TO FEARLESS: STRATEGIES FOR MORE CONFIDENT & EFFECTIVE PUBLIC SPEAKING

SUB B & C

Jordan H. Davis, Keynote Speaker

Have you ever wondered how some of the best public speakers can stand on a stage in front of hundreds - some even thousands - of people and move them with their words? This inspiring workshop teaches students how to be more confident, tell better stories, and thrive in a variety of speaking situations, from interviews and social mixers to the big stage. They'll learn tips from Jordan's 7+ years of experience as an international speaker who's spoken to audiences ranging from 30 to 13,000 people!

BECOME A NETWORKING NINJA

SUB D

Tracy Handt, author and owner of Local Energy Dealer Fundraising

You've seen the people who never look nervous; the ones who are comfortable meeting new people and connecting in a genuine way. While they make it look easy, these Networking Ninjas have mastered the skills that help them feel self-assured in potentially awkward situations. Come learn these skills for yourself, and enjoy humorous stories one Networking Ninja learned during her journey.

ZWILLING: OVER 290 YEARS OF QUALITY KNIFE MAKING

SUB 235

Chef Greg Beachey

Learn the history of knives and how they are made. Learn about all the different types of knives and how to use them in the commercial kitchen

HEALTHY RELATIONSHIPS

SUB 233

Meilyn Ordaz Revete, Prevention Coordinator, Haven

Gain a better understanding of what the signs of an unhealthy relationship and a healthy relationship look like.

RELATIONSHIPS 101

ALUMNI LOUNGE

Madi Herman Training Development Coordinator

This interactive workshop will break down common myths and misconceptions about relationships and highlight the differences between healthy, unhealthy, and abusive relationships. Participants will walk away with a better idea of what red flags in any type of relationship look like as well as skills for creating healthy relationships for a lifetime!

YOUR DIGITAL FOOTPRINT: SHAPING FUTURE CAREER OPPORTUNITIES

SUB FIREPLACE ROO

Pete Brown, CEO/Founder of Ash Interactive

Discover how your online presence can influence your future career opportunities in this insightful session. Learn tips and tricks to manage your digital footprint wisely and create a professional online image. We'll explore how businesses review candidate profiles and content during the hiring process and what they look for before interviews. Gain practical advice on curating your social media, staying mindful of your internet habits, and using online platforms to showcase your skills.

FCCLA 101 (PRE-REGISTRATION REQUIRED)

JABS 315

Brooklyn Gross

Welcome to FCCLA! Get ready for some hands-on activities to learn about FCCLA basics like National Programs, STAR Events, and FCS Career Pathways. Your Ultimate Journey is about to begin!

HEARTS IN ACTION: STUDENTS LEADING THROUGH SERVICE

JABS 305

Kelsey Ransom Director of Programs & Partnerships of The Otter Cares Foundation

Ever wanted to make a difference, but didn't know where to start? The OtterCares Foundation's philanthropy education program, Project Heart, will help you better understand your skills, interests, talents, and personal passions, and how you can use them to give back to your community and around the world.

DARING DREAMER WORKSHOPS

FRIDAY, MARCH 21

LEADERSHIP SEMINAR

1:00-2:45, JABS 315

*Pre-registration required.

FCCLA 101

Welcome to FCCLA! Get ready for some hands-on activities to learn about FCCLA basics like National Programs and FCS Career Pathways. Attendees will also discover creative ways to get involved in FCCLA.



BROOKLYNN GROSS

2:00-2:45

REST IS RESISTANCE: DEVELOP RITUALS FOR MENTAL AND PHYSICAL WELLBEING

SUB B & C

Jordan H. Davis, Keynote Speaker

In this workshop - inspired by the work of Tricia Hersey and The Nap Ministry - Jordan unpacks how students can combat sleep deprivation, loneliness and prolonged stress by seeing rest as a form of resistance to grind culture. Students will gain applicable tools that can help them achieve better school-life balance and healthier relationships.

PROMOTING YOUR PROGRAMS ON SOCIAL MEDIA

SUB FIREPLACE ROOM

Pete Brown, CEO and Founder of Ash Interactive

Join us for an interactive workshop covering tips and tricks for promoting your program on social media. We'll explore free smartphone tools, demonstrate how to optimize your presence at no cost, and share practical advice you can implement right away. Whether you're an adviser, student, or program director, you'll leave with actionable steps to boost your online reach and engagement. Bring your questions—there will be plenty of time for Q&A throughout the session!

WELCOME TO MORRIS BROWN COLLEGE

SUB 235

Justin Clark, Morris Brown College

Founded in 1881, Morris Brown College is a proud HBCU with a legacy of excellence. Our Hospitality Management Certificate Program, supported by The Arthur M. Blank Family Foundation, offers hands-on training inside an operational hotel. Visit our session to learn about the new Hospitality Management Certificate program at Morris Brown College and how we can help you get on the fast track to success in the hospitality industry.

VAPING: HELPING YOUR FRIENDS STEER CLEAR OF A HARMFUL ADDICTION

ALUMNI LOUNGE

Kris Minard Tobacco Use Prevention Education Specialist Dr. Beth Dominicus Tobacco Use Prevention Education Specialist

As we learn more and more about the harmful effects of vaping, it's important to understand how kids are targeted and manipulated by an industry whose goal is to make money from an addiction to their products. Youth are speaking out. Come to this session and learn what we now know about the harm of vaping, how it's been marketed to youth and what today's youth are doing to help their peers stay tobacco free.

VISION ZERO—MAKING AN IMPACT ALL ACROSS THE STATE

SUB D

Sheila Cozzie, Montana Department of Transportation and members of the Moore chapter

Attend this session to learn all about opportunities for your chapter with the Montana Department of Transportation's Vision Zero project. Sheila Cozzie will share current programs available, and learn how Moore FCCLA's made a positive local impact on traffic safety through their Vision Zero project.

ULTIMATE ENGAGEMENT OPTIONS

FRIDAY, MARCH 21 - LEIGH LOUNGE

FIRST SESSION: 3:00-3:45

SECOND SESSION: 4:00-4:45

BOOT SCOOTIN BOOGIE



Inspiration Hall, Norm Asbjornson Hall

Sandy Woldstad, Chapter Advisor and Board Member

Yee haw! Let's dance! Attendees of this workshop will learn the basics, and maybe a few advanced moves, of jitterbug (also known as swing dance) and the 2-step country dance. Instructor, Sandy Woldstad, has been teaching dance lessons to kids and adults for over 15 years and will walk you through basic steps and moves such as the Pretzel, Table Top, Window, Candle Stick, and spins. If time permits, attendees will also be introduced to the country 2-step dance



SELF DIRECTED SESSIONS: 3:00-4:45

MONTANA MAYHEM



SUB 233/235

Visit your State Executive Council for engaging opportunities, earning a stamp at each station to win big prizes while you network with others.

CONNECTION ROOM



SUB Fireplace Room

Push pause for a moment and connect with others in a quiet environment. Complete some coloring pages, reflect on SLC, and make a friendship bracelet.

SERVICE ROOM



haven

YSA Youth
Changing
the World
YOUTH SERVICE AMERICA

Alumni Lounge

Participate in service activities to enhance your well-being while making a difference for others. Create custom inspirational artwork for Haven clients re-establishing independence. Service projects sponsored by Youth Service America.

FRIDAY, MARCH 21ST

REC ROOM AT THE SUB!



MATCH YOUR WRISTBAND
TO YOUR TIME IN THE REC ROOM

Thank you for visiting only during your
assigned times!

COLOR	REC ROOM TIME
GREEN	3:00-3:30
ORANGE	3:30-4:00
YELLOW	4:00-4:30
BLUE	4:30-5:00

CLOSING GENERAL SESSION

FRIDAY, MARCH 21 6:15 PM

SUB BALLROOMS A, B, C & D

Business Meeting
Outreach Awards
STAR and Skill Event Awards

Officer Installation
Event Results Pick Up



CONGRATULATIONS 2025-26 STATE EXECUTIVE COUNCIL!

- District 1** – Laurlynn Harrell, Power (Adviser: Lauren Vick)
- District 2** – Brock Romero, Manhattan (Adviser: Amanda Swenson)
- District 3/9** – Lexie Wichman, Fergus (Adviser: Mandy Eike)
- District 4** –Bradlie Joseph, Hunley Project (Adviser: Edie Vogel)
- District 5** – Luca Helvik (Adviser: Adele Stenson & Laure Wirtzfeld)
- District 6/7** – Isabel Hunter, Powell County (Adviser: Kacie Perkins)
- District 8** – Gracie Baker, Glasgow (Adviser: Karleen Fossum)
- District 10** – Mackenzie Hess, Columbus (Adviser: Lorie Martinez)
- District 11** – Madison Nelson, Ennis (Adviser: Jamie Diehl)

THE FCCLA & PROSTART TEAM



Tracey Eatherton
FCCLA & Prostart Director



Gayla Randel
OPI FCS Specialist



Shae Bruursema
FCCLA State Executive
Council Coordinator



Nicole Wanago
MSU FCS
Teacher Educator



Jordan Collins
Prostart Coordinator



Halee Wilson
Event Coordinator



Ellie Lee
Conference Assistant

ANNUAL BUSINESS MEETING AGENDA



FRIDAY, MARCH 21, 2025

STUDENT UNION BUILDING, MONTANA STATE UNIVERSITY

BOZEMAN, MONTANA

6:15-6:35

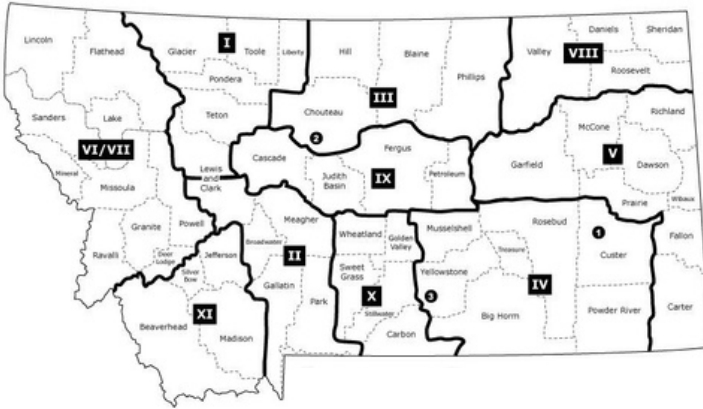
- I. Call to Order and Welcome..... Cathe Felz, President
- II. Roll Call for Quorum..... Adele Stenson, Secretary
- III. Reports
 - A. Financial..... Cathe Felz, President
 - B. State Executive Council.....Jill Baumgardner, SEC President
- IV. Election of Officers..... Sandy Woldstad, Vice President
 - A. 3 Year Term Director Candidates:
- V. Update on Organizational Activities.....Cathe Felz, President
 - A. Activities
 - B. Accomplishments
 - C. Challenges
- VI. Announcements.....Cathe Felz, President
- VII. Adjournment.....Cathe Felz, President

SPECIAL THANKS TO THE MONTANA FCCLA BOARD OF DIRECTORS

Cathe Felz, President
Adele Stenson, Secretary
Beth Evenhuis
Susie Francis
Jill Baumgardner
Nicole Wanago

Sandy Woldstad, Vice-President
Joanna Krogstad, Treasurer
Megan Vincent
Aiden Kramer
Gayla Randel

MT FCCLA AFFILIATED CHAPTERS



★New chapter

DISTRICT 1

Browning: Kami Wellman
 Conrad: Stacy Aaberg
 Cut Bank: Rachel Brown
 Dutton Brady: Keely McDonald
 Fairfield: Carly Beck
 Power: Lauren Vick
 Sunburst: Shayle Ehlers

DISTRICT 2

Belgrade: Melanie Young & Kortney Douma
 Bozeman: Beth Evenhuis
 Broadwater: Carley Gunderson
 Gallatin: Bethany Ringer & Celeste Miller
 Manhattan: Amanda Swenson
 Three Forks: Cathe Felz
 White Sulphur: Katie Hanson

DISTRICT 3/9

CM Russell: Danielle Stark
 Fergus: Megan Vincent & Jocelyn Krogstad
 Malta: Katie Smith
 Moore: Mandy Eike
 North Star: Jessica Myers, Jessica Dodds

DISTRICT 4

Billings Skyview: Lindsay Hubbert & Lindi Kurschner
 Colstrip: Deanna Patton
 Forsyth: Kim Knoche
 Huntley Project: Edie Vogel
 Lockwood: Hope Hamilton
 Roundup: Tami Engstrom
 Shepherd: Jessica Haynie

DISTRICT 5

Carter County: Amy Walker
 Dawson County: Renique Burke
 Fairview: Angie Hopes
 Garfield County: Barb Clark
 Plevna: Stephanie Robertus
 Sidney: Cheyenne Ryan
 Wibaux: Adele Stenson, Laure Wirtzfeld

DISTRICT 6/7

Arlee: Leslie Jackson
 Columbia Falls: Lindsey Racioppi
 Flathead: Karen Strong & Stacy Hughes
 Glacier: Kelly Byerley, Tyler Wells
 Hot Springs: Brenda Haase
 Polson: Stephanie Anderson
 Powell County: Kacie Perkins
 Ronan: Katie Umbriaco
 Stevensville: Amy Paxton

DISTRICT 8

Glasgow: Karleen Fossum
 Medicine Lake: Megan Murphy
 Plentywood: Dona Osksa
 Poplar: Jeanine Grenada

DISTRICT 10

Columbus: Lorie Martinez
 Harlowton: Sandy Woldstad
 Laurel: Jennifer Painter
 Park City: Sarah Bolin
 Red Lodge: Heather Quenzer
 Reed Point: Raven Ablard

DISTRICT 11

Beaverhead: Kim Konen
 Ennis: Jamie Diehl
 Jefferson: Cassidy Parsons
 Sheridan: Heather Puckett

CAMPUS MAP & PARKING



DINING

1 = Miller Dining Hall

PARKING

2 = Suburban and Event Evaluator Parking
(Parking Garage)

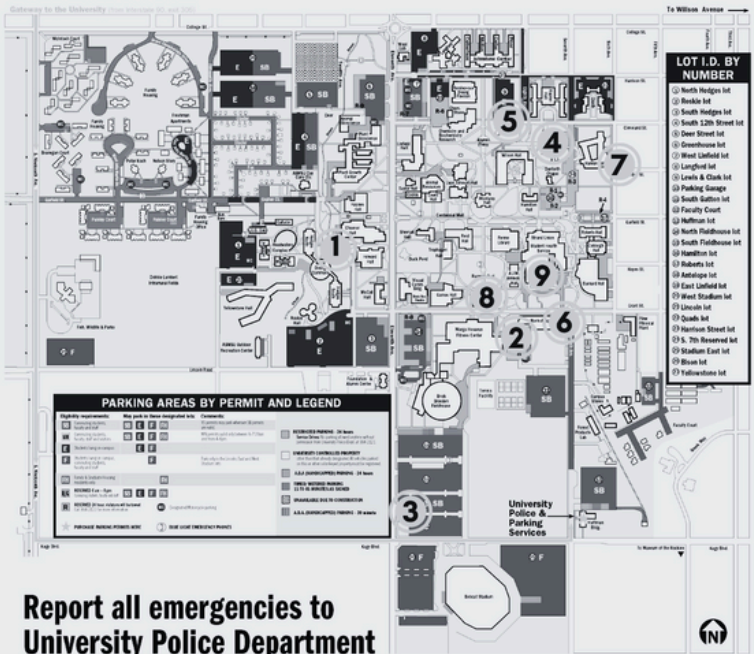
3 = Bus Parking
(South Fieldhouse Lot 15)

COMPETITIVE EVENTS

4 = Herrick Hall
5 = Jabs Hall
6 = Norm Asbjornson Hall
7 = Gallatin College (Hannon Hall)
8 = Romney Hall

GENERAL SESSIONS

9 = Strand Union Building (SUB)



Report all emergencies to University Police Department

FCCLA SIGNAGE WILL BE LOCATED THROUGHOUT CAMPUS TO ASSIST STUDENTS IN EASILY FINDING THEIR BUILDINGS AND ROOMS.

BRING GOOD SHOES FOR WALKING AND INCLEMENT WEATHER.



The cost of parking on the MSU campus is included in the registration cost. Advisers received specific parking instructions at registration which must be followed to avoid parking fines. Please park all vehicles (except buses) in the parking garage and use the provided instructions to avoid parking fines.

ARRIVAL

When arriving on Thursday and Friday, a map will be distributed (by March 1) with specific directions to ensure traffic flows as smoothly as possible. Parking attendants will be available and any bus not following the flow will be turned around. Please plan to arrive early and be patient as buses are unloaded.

DEPARTURE

When departing in the evenings, attendees will go to the parking lot where their bus or suburban is parked. Busses will not be permitted to pull up to the SUB to pick participants up.

Say **Yes** to FCS

Make a Career in Family and Consumer Sciences Count!

As an FCS Educator you have the opportunity to:

Make
Real World
Skills
COUNT!

Make
Service
Learning
COUNT!

Make
Students'
Futures
COUNT!

Make
Work-Life
Balance
COUNT!

Make
Career
Preparation
COUNT!

Make
Family
Relationships
COUNT!